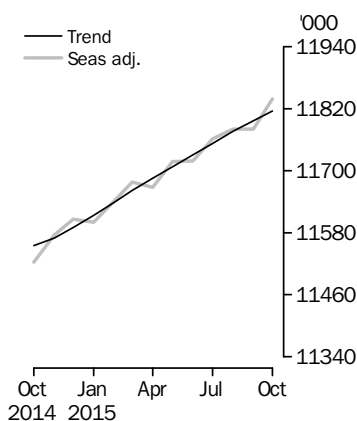


LABOUR FORCE

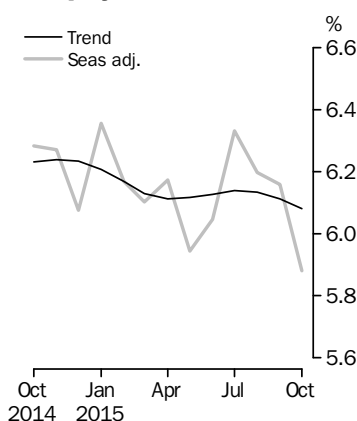
AUSTRALIA

EMBARGO: 11.30AM (CANBERRA TIME) THURS 12 NOV 2015

Employed Persons



Unemployment Rate



INQUIRIES

For further information about these and related statistics, email client.services@abs.gov.au or contact the National Information and Referral Service on 1300 135 070.

KEY FIGURES

	Sep 2015	Oct 2015	Sep 15 to Oct 15	Oct 14 to Oct 15
Trend				
Employed persons ('000)	11 796.6	11 815.4	18.8	2.3 %
Unemployed persons ('000)	768.0	764.9	-3.1	-0.4 %
Unemployment rate (%)	6.1	6.1	0.0 pts	-0.2 pts
Participation rate (%)	65.0	65.0	0.0 pts	0.4 pts
Seasonally Adjusted				
Employed persons ('000)	11 779.6	11 838.2	58.6	2.7 %
Unemployed persons ('000)	772.9	739.5	-33.4	-4.3 %
Unemployment rate (%)	6.2	5.9	-0.3 pts	-0.4 pts
Participation rate (%)	64.9	65.0	0.1 pts	0.5 pts

KEY POINTS

TREND ESTIMATES (MONTHLY CHANGE)

- Employment increased to 11,815,400.
- Unemployment decreased to 764,900.
- Unemployment rate remained steady at 6.1%.
- Participation rate remained steady at 65.0%.
- Monthly hours worked in all jobs increased 5.7 million hours to 1,647.1 million hours.

SEASONALLY ADJUSTED ESTIMATES (MONTHLY CHANGE)

- Employment increased 58,600 to 11,838,200. Full-time employment increased 40,000 to 8,171,600 and part-time employment increased 18,600 to 3,666,600.
- Unemployment decreased 33,400 to 739,500. The number of unemployed persons looking for full-time work decreased 30,300 to 526,300 and the number of unemployed persons only looking for part-time work decreased 3,100 to 213,200.
- Unemployment rate decreased 0.3 pts to 5.9%.
- Participation rate increased 0.1 pts to 65.0%.
- Monthly hours worked in all jobs increased 19.1 million hours (1.2%) to 1,660.4 million hours.

NOTES

FORTHCOMING ISSUES

<i>ISSUE</i>	<i>RELEASE DATE</i>
November 2015	10 December 2015
December 2015	14 January 2016
January 2016	18 February 2016
February 2016	17 March 2016
March 2016	14 April 2016
April 2016	19 May 2016

WHAT'S NEW IN THE LABOUR FORCE

For details regarding an update to the Labour Force Survey questionnaire from December 2015 and the publication of quarterly rebenchmarked estimates, refer to "What's new in the Labour Force" on page 6.

ROUNDING

Estimates of changes shown on the front cover and used in the commentary have been calculated using unrounded estimates, and may be different from, but are more accurate than, movement obtained from the rounded estimates. The graphs on the front cover also depict unrounded estimates.

SAMPLING ERROR

The estimates in this publication are based on a sample survey. Published estimates and movements are subject to sampling variability. Standard errors give a measure of sampling variability. The interval bounded by two standard errors is the 95% confidence interval, which provides a way of looking at the variability inherent in estimates. There is a 95% chance that the true value of the estimate lies within that interval.

MOVEMENTS IN SEASONALLY ADJUSTED SERIES BETWEEN SEPTEMBER 2015 AND OCTOBER 2015

	<i>Monthly change.....</i>	<i>95% Confidence interval.....</i>		
Total Employment	58 600	400	to	116 800
Total Unemployment	-33 400	-71 600	to	4 800
Unemployment rate	-0.3 pts	-0.7 pts	to	0.1 pts
Participation rate	0.1 pts	-0.3 pts	to	0.5 pts

David W. Kalisch
Australian Statistician

LABOUR FORCE COMMENTARY OCTOBER 2015

NATIONAL ESTIMATES

Australia's trend estimate of employment increased by 18,800 persons in October 2015, with:

- the participation rate remaining at 65 per cent,
- the number of unemployed persons decreasing by 3,100, and
- the unemployment rate remaining at 6.1 per cent.

The trend unemployment rate has been at 6.1 per cent since March 2015.

Since October 2014, trend employment has increased by 260,500 persons, while the civilian population aged 15 years and over grew by 288,200 persons over the same period. This is reflected in an increase in the trend employment to population ratio over the year from 60.6 per cent to 61.1 per cent. The trend unemployment rate has remained relatively stable over the year, decreasing from 6.2 per cent to 6.1 per cent.

The trend series smooth the more volatile seasonally adjusted estimates.

The seasonally adjusted unemployment rate for October 2015 was 5.9 per cent (down 0.3 percentage points) and the labour force participation rate was 65.0 per cent (up 0.1 percentage points).

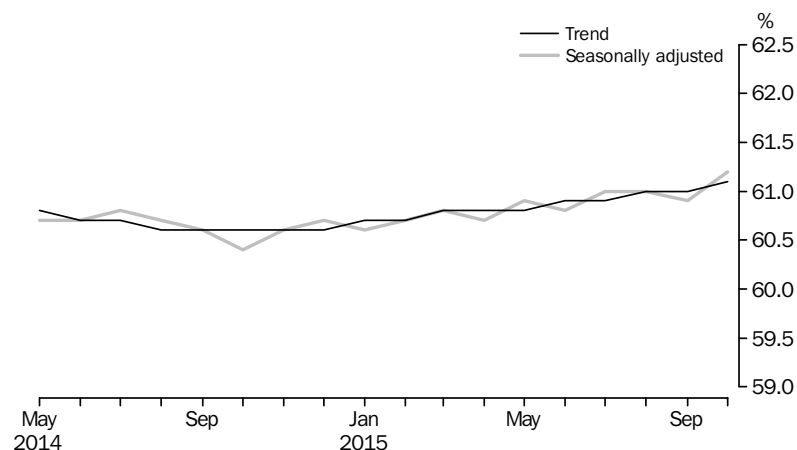
Seasonally adjusted employment increased by 58,600 persons in October 2015. Full-time employment increased by 40,000 persons to 8,171,600 while part-time employment increased by 18,600 to 3,666,600 persons in October 2015. The increase in total employment resulted from:

- an increase in male full-time employment, up 33,500 persons,
- an increase in female part-time employment, up 24,000 persons,
- an increase in female full-time employment, up 6,500 persons, and
- a decrease in male part-time employment, down 5,400 persons.

Seasonally adjusted monthly hours worked in all jobs increased 19.1 million hours in October 2015 to 1,660.4 million hours.

The seasonally adjusted employment to population ratio increased 0.2 percentage points (in unrounded terms) to 61.2% in October 2015.

EMPLOYMENT TO POPULATION RATIO, PERSONS, May 2014 to October 2015



STATE ESTIMATES

The largest absolute increase in seasonally adjusted employment was in Victoria (up 26,100 persons). This was a strong but not unprecedented movement, with 12 larger movements in absolute terms over the life of the series including the most recent in December 2014 (up 30,300 persons). In trend terms, employment in Victoria increased by 3,400 persons.

The largest increase in the seasonally adjusted participation rate was in Western Australia (up 0.9 percentage points, following a 0.7 percentage point decrease between August and September 2015). In trend terms, the increase was 0.1 percentage points, continuing a relatively steady increase in the participation rate in Western Australia from 68.6 per cent in May 2015 to 68.9 per cent in October 2015.

The largest decrease in the seasonally adjusted unemployment rate was in Victoria (down 0.7 percentage points, following a 0.2 percentage point increase between August and September 2015, based on unrounded estimates). The trend unemployment rate in Victoria remained at 6.0 per cent (in rounded terms).

Seasonally adjusted estimates are not published for the territories and the ABS recommends using trend estimates to analyse the underlying behaviour of the series.

UNEMPLOYMENT RATE, STATES AND TERRITORIES, September 2015 and October 2015

	TREND		SEASONALLY ADJUSTED	
	
	September	October	September	October
	%	%	%	%
New South Wales	5.8	5.7	5.8	5.5
Victoria	6.0	6.0	6.3	5.6
Queensland	6.3	6.3	6.3	6.2
South Australia	7.8	7.7	7.7	7.5
Western Australia	6.3	6.4	6.1	6.4
Tasmania	6.3	6.2	6.0	6.5
Northern Territory	4.5	4.5	np	np
Australian Capital Territory	5.0	5.1	np	np
Australia	6.1	6.1	6.2	5.9

np not available for publication but included in totals where applicable, unless otherwise indicated

GROSS FLOWS

Gross flows (Data Cube GM1) highlight the change in labour force status of individuals between last month and this month. Gross flows are derived from the matched part of the sample that is common between two consecutive months. After taking account of sample rotation and varying non-response each month, this is approximately 80% of the sample. However, the level and movement estimates produced from the gross flows will not necessarily represent 80% of the level and movement estimates in a given month from the whole sample. Despite this limitation, analysis of the gross flows data can provide an indication, in original terms, of underlying movements in the labour market.

In original terms between September and October 2015 the number of persons employed increased by 92,700 with gross flows showing a net increase of 48,600. The increase shown in the gross flows comprised:

- 220,200 persons whose status changed from not in the labour force to employed,

GROSS FLOWS *continued*

- 122,800 persons whose status changed from unemployed to employed,
- 72,900 persons whose status changed from employed to unemployed, and
- 221,500 persons whose status changed from employed to not in the labour force.

In original terms between September and October 2015 the number of persons unemployed decreased by 38,200 with gross flows showing a net decrease of 35,400. The decrease shown in the gross flows comprised:

- 122,800 persons whose status changed from unemployed to employed,
- 121,500 persons whose status changed from unemployed to not in the labour force,
- 72,900 persons whose status changed from employed to unemployed, and
- 136,000 persons whose status changed from not in the labour force to unemployed.

As the gross flows data are presented in original terms they are not directly comparable to the seasonally adjusted and trend data discussed elsewhere in the commentary.

WHAT'S NEW IN THE LABOUR FORCE

UPDATE TO LABOUR FORCE SURVEY QUESTIONNAIRE

Commencing with the December 2015 Labour Force Survey, a minor wording change will be made to one question relating to the job search activity undertaken during the reference week. This change is necessary as the question currently refers to a superseded Australian Government program, Job Services Australia, which was replaced by the jobactive program from July 2015.

The question wording will be updated from:

"At any time in the last 4 weeks [have you/has name] checked or registered with a Job Services Australia provider or any other employment agency?" to

"At any time in the last 4 weeks [have you/has name] checked or registered with an employment agency?"

As the name of programs may change in the future, the question will refer to the generic "employment agency" rather than a specific program. The updated question wording is equivalent to the wording used prior to the changed questionnaire introduced in July 2014. As this question will remain an active job search step for the purpose of classifying a respondent as unemployed, and will continue to be asked in the same sequence relative to other job search questions, no discernible impact on the unemployment rate is anticipated as a result of this change. However, the ABS will monitor the impact of the revised question wording and response trends for job search questions.

PUBLICATION OF QUARTERLY REBENCHMARKED DATA

From the August 2015 issue the ABS commenced quarterly updating (rebenchmarking) Labour Force population benchmarks with the latest available Estimated Resident Population series. To enable users to assess the impact of the rebenchmarking the ABS will publish rebenchmarking Labour Force estimates one week prior to each quarterly (February, May, August and November) release of *Labour Force, Australia* (cat. no. 6202.0). The rebenchmarking estimates will include time series up to the month before the quarterly month.

The rebenchmarking estimates will be published under *Labour Force, Australia - Rebenchmarking Estimates* (cat. no. 6202.0.55.003) which will include all spreadsheets and one data cube currently released as part of *Labour Force, Australia*. As the purpose of this release is to enable the effect of revised population benchmarks to be analysed, a media release will not usually be provided. Rebenchmarking estimates relating to data published in both *Labour Force, Australia, Detailed - Electronic Delivery* (cat. no. 6291.0.55.001) and *Labour Force, Australia, Detailed, Quarterly* (cat. no. 6291.0.55.003) will continue to be published along with the current month estimates one week after each quarterly release of *Labour Force, Australia*.

When each quarterly release of *Labour Force, Australia* is published seasonally adjusted and trend rebenchmarking estimates will be subject to further revision as a result of concurrent seasonal adjustment utilising the additional observation.

LABOUR FORCE STATUS (AGED 15 YEARS AND OVER), Australia: Trend

	EMPLOYED				UNEMPLOYED			LABOUR FORCE	
	Full-time	Part-time	Total	Employment to	Looked for	Total	Unemployment rate	Total	Participation rate
				population ratio					
	'000	'000	'000	%	'000	'000	%	'000	%
PERSONS									
October 2012	8 018.4	3 365.5	11 383.9	61.6	466.3	638.2	5.3	12 022.1	65.1
October 2013	7 963.7	3 486.1	11 449.8	61.0	514.6	699.3	5.8	12 149.2	64.7
2014									
October	8 012.0	3 542.8	11 554.9	60.6	542.2	768.0	6.2	12 322.9	64.6
November	8 019.2	3 550.8	11 570.0	60.6	543.0	769.8	6.2	12 339.8	64.6
December	8 031.0	3 559.0	11 590.0	60.6	543.7	770.4	6.2	12 360.4	64.7
2015									
January	8 045.3	3 568.3	11 613.6	60.7	542.8	768.7	6.2	12 382.3	64.7
February	8 060.3	3 577.8	11 638.1	60.7	540.0	765.1	6.2	12 403.2	64.7
March	8 074.7	3 587.6	11 662.2	60.8	536.9	761.5	6.1	12 423.7	64.7
April	8 087.9	3 597.0	11 684.9	60.8	536.0	760.8	6.1	12 445.7	64.8
May	8 100.3	3 606.8	11 707.1	60.8	538.0	762.7	6.1	12 469.8	64.8
June	8 112.5	3 617.6	11 730.1	60.9	542.1	765.7	6.1	12 495.8	64.9
July	8 124.5	3 628.5	11 753.0	60.9	546.4	768.6	6.1	12 521.5	64.9
August	8 136.4	3 639.2	11 775.6	61.0	549.1	769.4	6.1	12 545.0	65.0
September	8 147.4	3 649.2	11 796.6	61.0	549.9	768.0	6.1	12 564.5	65.0
October	8 158.1	3 657.3	11 815.4	61.1	549.3	764.9	6.1	12 580.3	65.0
MALES									
October 2012	5 184.5	994.1	6 178.6	67.8	282.4	348.8	5.3	6 527.5	71.7
October 2013	5 131.0	1 064.2	6 195.2	66.9	312.7	384.8	5.8	6 579.9	71.1
2014									
October	5 173.3	1 078.0	6 251.2	66.5	323.9	411.1	6.2	6 662.3	70.9
November	5 180.4	1 080.1	6 260.6	66.6	325.7	412.7	6.2	6 673.3	70.9
December	5 189.1	1 083.2	6 272.3	66.6	327.4	414.2	6.2	6 686.5	71.0
2015									
January	5 197.6	1 087.8	6 285.4	66.6	327.8	415.1	6.2	6 700.5	71.0
February	5 204.2	1 093.6	6 297.8	66.7	326.5	414.6	6.2	6 712.4	71.1
March	5 208.1	1 100.6	6 308.7	66.7	323.9	412.9	6.1	6 721.6	71.1
April	5 209.7	1 107.9	6 317.7	66.7	321.7	411.5	6.1	6 729.1	71.1
May	5 211.2	1 114.3	6 325.5	66.7	320.8	410.8	6.1	6 736.3	71.1
June	5 214.3	1 118.9	6 333.2	66.7	321.3	410.8	6.1	6 744.1	71.0
July	5 219.1	1 122.2	6 341.3	66.7	322.4	411.6	6.1	6 752.9	71.0
August	5 225.7	1 124.5	6 350.3	66.7	323.4	412.3	6.1	6 762.6	71.1
September	5 232.8	1 126.0	6 358.8	66.7	323.8	412.5	6.1	6 771.3	71.1
October	5 241.6	1 126.0	6 367.6	66.8	323.8	412.0	6.1	6 779.6	71.1
FEMALES									
October 2012	2 833.9	2 371.4	5 205.3	55.6	183.9	289.3	5.3	5 494.6	58.7
October 2013	2 832.8	2 421.9	5 254.7	55.1	201.9	314.6	5.6	5 569.2	58.4
2014									
October	2 838.8	2 464.8	5 303.6	54.8	218.4	356.9	6.3	5 660.5	58.5
November	2 838.8	2 470.6	5 309.4	54.8	217.2	357.1	6.3	5 666.5	58.5
December	2 841.9	2 475.8	5 317.7	54.8	216.3	356.2	6.3	5 673.9	58.5
2015									
January	2 847.8	2 480.5	5 328.2	54.9	215.0	353.6	6.2	5 681.8	58.5
February	2 856.1	2 484.2	5 340.3	54.9	213.5	350.4	6.2	5 690.8	58.5
March	2 866.6	2 487.0	5 353.6	55.0	213.0	348.6	6.1	5 702.1	58.6
April	2 878.1	2 489.1	5 367.2	55.1	214.3	349.4	6.1	5 716.6	58.6
May	2 889.1	2 492.5	5 381.6	55.1	217.2	351.9	6.1	5 733.5	58.7
June	2 898.2	2 498.7	5 396.9	55.2	220.8	354.9	6.2	5 751.8	58.9
July	2 905.4	2 506.3	5 411.7	55.3	224.0	356.9	6.2	5 768.6	59.0
August	2 910.7	2 514.6	5 425.3	55.4	225.8	357.1	6.2	5 782.4	59.0
September	2 914.6	2 523.2	5 437.7	55.5	226.1	355.5	6.1	5 793.3	59.1
October	2 916.5	2 531.3	5 447.8	55.5	225.5	352.9	6.1	5 800.7	59.1

LABOUR FORCE STATUS (AGED 15 YEARS AND OVER), Australia: **Seasonally adjusted**

	EMPLOYED				UNEMPLOYED			LABOUR FORCE	
	Full-time	Part-time	Total	Employment to	Looked for	Total	Unemployment rate	Total	Participation rate
				population ratio					
	'000	'000	'000	%	'000	'000	%	'000	%
PERSONS									
October 2012	8 031.6	3 349.7	11 381.3	61.6	465.5	641.4	5.3	12 022.7	65.1
October 2013	7 952.8	3 499.7	11 452.5	61.0	519.5	697.8	5.7	12 150.3	64.7
2014									
October	8 004.5	3 518.7	11 523.2	60.4	533.5	772.6	6.3	12 295.8	64.5
November	8 012.6	3 562.7	11 575.3	60.6	546.5	774.4	6.3	12 349.7	64.7
December	8 049.8	3 556.7	11 606.5	60.7	542.6	750.7	6.1	12 357.2	64.7
2015									
January	8 026.1	3 573.9	11 600.0	60.6	546.0	787.4	6.4	12 387.3	64.7
February	8 063.1	3 577.6	11 640.7	60.7	543.1	765.1	6.2	12 405.8	64.7
March	8 097.9	3 580.4	11 678.4	60.8	540.7	759.0	6.1	12 437.4	64.8
April	8 074.2	3 593.5	11 667.7	60.7	539.9	767.6	6.2	12 435.3	64.7
May	8 093.0	3 624.7	11 717.6	60.9	511.5	740.5	5.9	12 458.2	64.8
June	8 115.6	3 603.7	11 719.2	60.8	539.2	754.2	6.0	12 473.4	64.8
July	8 129.8	3 630.7	11 760.5	61.0	562.8	794.8	6.3	12 555.3	65.1
August	8 142.0	3 638.4	11 780.4	61.0	559.8	778.2	6.2	12 558.6	65.0
September	8 131.6	3 648.0	11 779.6	60.9	556.6	772.9	6.2	12 552.5	64.9
October	8 171.6	3 666.6	11 838.2	61.2	526.3	739.5	5.9	12 577.8	65.0
MALES									
October 2012	5 196.4	992.3	6 188.7	67.9	279.6	342.4	5.2	6 531.1	71.7
October 2013	5 119.0	1 077.8	6 196.7	67.0	318.4	387.3	5.9	6 584.0	71.1
2014									
October	5 156.7	1 080.7	6 237.4	66.4	317.5	411.5	6.2	6 648.9	70.8
November	5 187.6	1 083.9	6 271.5	66.7	332.6	420.0	6.3	6 691.5	71.1
December	5 201.1	1 071.4	6 272.5	66.6	325.1	399.4	6.0	6 671.9	70.9
2015									
January	5 178.6	1 091.1	6 269.7	66.5	329.5	426.4	6.4	6 696.1	71.0
February	5 207.1	1 094.1	6 301.2	66.7	328.7	415.5	6.2	6 716.7	71.1
March	5 238.7	1 094.3	6 333.0	67.0	325.5	410.9	6.1	6 743.9	71.3
April	5 190.0	1 117.4	6 307.4	66.6	322.6	415.7	6.2	6 723.0	71.0
May	5 207.0	1 116.7	6 323.8	66.7	311.9	404.0	6.0	6 727.7	71.0
June	5 213.2	1 108.5	6 321.8	66.6	319.7	407.0	6.0	6 728.8	70.9
July	5 219.0	1 128.9	6 347.8	66.8	324.6	413.8	6.1	6 761.6	71.1
August	5 229.9	1 128.5	6 358.4	66.8	326.2	414.5	6.1	6 772.8	71.2
September	5 222.3	1 126.2	6 348.5	66.6	333.4	422.3	6.2	6 770.8	71.1
October	5 255.8	1 120.8	6 376.6	66.8	312.5	401.3	5.9	6 777.9	71.0
FEMALES									
October 2012	2 835.2	2 357.3	5 192.6	55.4	185.9	299.0	5.4	5 491.6	58.6
October 2013	2 833.8	2 422.0	5 255.8	55.2	201.0	310.5	5.6	5 566.3	58.4
2014									
October	2 847.8	2 438.0	5 285.8	54.6	216.0	361.1	6.4	5 646.9	58.4
November	2 825.1	2 478.8	5 303.8	54.8	213.9	354.4	6.3	5 658.2	58.4
December	2 848.7	2 485.3	5 334.0	55.0	217.5	351.3	6.2	5 685.4	58.6
2015									
January	2 847.5	2 482.7	5 330.2	54.9	216.6	361.0	6.3	5 691.2	58.6
February	2 856.0	2 483.4	5 339.4	54.9	214.4	349.6	6.1	5 689.1	58.5
March	2 859.2	2 486.1	5 345.3	54.9	215.2	348.2	6.1	5 693.5	58.5
April	2 884.2	2 476.1	5 360.3	55.0	217.2	352.0	6.2	5 712.3	58.6
May	2 886.0	2 507.9	5 393.9	55.3	199.6	336.6	5.9	5 730.4	58.7
June	2 902.3	2 495.1	5 397.5	55.2	219.5	347.1	6.0	5 744.6	58.8
July	2 910.8	2 501.8	5 412.7	55.3	238.3	381.0	6.6	5 793.7	59.2
August	2 912.1	2 510.0	5 422.0	55.4	233.6	363.7	6.3	5 785.7	59.1
September	2 909.3	2 521.8	5 431.1	55.4	223.3	350.6	6.1	5 781.7	59.0
October	2 915.8	2 545.8	5 461.6	55.6	213.9	338.2	5.8	5 799.8	59.1

LABOUR FORCE STATUS (AGED 15 YEARS AND OVER), Australia: **Original**

	EMPLOYED				UNEMPLOYED			LABOUR FORCE			
	Full-time	Part-time	Total	Employment to	Looked for full-time work	Total	Unemployment rate	Total	Participation rate	Not in the labour force	Civilian population aged 15 and over
				population ratio							
'000	'000	'000	%	'000	'000	%	'000	%	'000	'000	
PERSONS											
October 2012	8 005.8	3 396.2	11 402.0	61.7	452.8	623.1	5.2	12 025.1	65.1	6 448.9	18 474.1
October 2013	7 930.2	3 546.2	11 476.5	61.1	505.8	679.1	5.6	12 155.6	64.7	6 628.5	18 784.0
2014											
October	7 982.0	3 564.6	11 546.6	60.5	518.1	750.5	6.1	12 297.0	64.5	6 773.6	19 070.7
November	8 012.9	3 563.9	11 576.8	60.6	517.6	722.7	5.9	12 299.5	64.4	6 791.7	19 091.1
December	8 153.0	3 554.7	11 707.7	61.3	528.9	731.4	5.9	12 439.1	65.1	6 672.5	19 111.6
2015											
January	8 004.7	3 453.9	11 458.5	59.9	592.9	835.6	6.8	12 294.2	64.2	6 845.4	19 139.6
February	8 151.5	3 562.8	11 714.3	61.1	582.0	836.4	6.7	12 550.7	65.5	6 616.8	19 167.6
March	8 075.3	3 613.4	11 688.7	60.9	557.4	808.0	6.5	12 496.7	65.1	6 698.8	19 195.5
April	8 056.4	3 644.7	11 701.1	60.9	532.3	764.4	6.1	12 465.6	64.9	6 752.2	19 217.7
May	8 110.4	3 663.4	11 773.8	61.2	504.3	730.1	5.8	12 503.9	65.0	6 736.0	19 239.9
June	8 087.8	3 659.6	11 747.4	61.0	533.1	729.8	5.8	12 477.2	64.8	6 784.9	19 262.1
July	8 151.0	3 604.9	11 755.9	61.0	557.2	770.7	6.2	12 526.7	64.9	6 760.3	19 287.0
August	8 056.1	3 642.2	11 698.3	60.6	542.0	761.4	6.1	12 459.6	64.5	6 852.1	19 311.8
September	8 113.2	3 655.7	11 768.8	60.9	537.5	753.6	6.0	12 522.4	64.8	6 814.2	19 336.6
October	8 146.9	3 714.6	11 861.5	61.3	508.4	715.4	5.7	12 576.9	65.0	6 782.0	19 358.9
MALES											
October 2012	5 185.0	1 006.7	6 191.7	68.0	275.6	335.8	5.1	6 527.4	71.7	2 580.6	9 108.0
October 2013	5 107.3	1 093.0	6 200.3	67.0	314.9	380.9	5.8	6 581.2	71.1	2 673.9	9 255.1
2014											
October	5 143.4	1 095.9	6 239.4	66.4	313.2	403.1	6.1	6 642.5	70.7	2 753.8	9 396.3
November	5 197.8	1 071.6	6 269.5	66.7	318.8	398.9	6.0	6 668.3	70.9	2 737.9	9 406.2
December	5 268.4	1 061.6	6 330.0	67.2	313.0	391.1	5.8	6 721.1	71.4	2 695.0	9 416.2
2015											
January	5 167.2	1 051.0	6 218.2	65.9	357.6	460.1	6.9	6 678.3	70.8	2 751.8	9 430.1
February	5 260.8	1 083.6	6 344.3	67.2	347.5	445.3	6.6	6 789.6	71.9	2 654.4	9 444.0
March	5 232.6	1 102.8	6 335.4	67.0	332.8	428.0	6.3	6 763.4	71.5	2 694.5	9 457.9
April	5 188.6	1 142.8	6 331.5	66.9	315.1	407.5	6.0	6 739.0	71.2	2 730.1	9 469.1
May	5 213.6	1 143.1	6 356.7	67.1	301.9	389.9	5.8	6 746.5	71.2	2 733.8	9 480.3
June	5 189.8	1 142.5	6 332.3	66.7	314.9	393.7	5.9	6 725.9	70.9	2 765.6	9 491.6
July	5 226.5	1 114.5	6 341.0	66.7	323.2	405.9	6.0	6 746.8	71.0	2 757.2	9 504.1
August	5 183.1	1 110.8	6 293.9	66.1	336.2	418.2	6.2	6 712.1	70.5	2 804.4	9 516.5
September	5 197.6	1 132.9	6 330.5	66.4	324.1	416.2	6.2	6 746.7	70.8	2 782.4	9 529.0
October	5 240.2	1 136.8	6 376.9	66.8	306.2	390.8	5.8	6 767.7	70.9	2 772.2	9 539.9
FEMALES											
October 2012	2 820.9	2 389.5	5 210.4	55.6	177.2	287.3	5.2	5 497.7	58.7	3 868.4	9 366.1
October 2013	2 822.9	2 453.3	5 276.2	55.4	190.9	298.2	5.3	5 574.4	58.5	3 954.6	9 529.0
2014											
October	2 838.6	2 468.6	5 307.2	54.9	204.9	347.4	6.1	5 654.6	58.4	4 019.8	9 674.4
November	2 815.1	2 492.3	5 307.3	54.8	198.8	323.8	5.8	5 631.1	58.1	4 053.8	9 684.9
December	2 884.5	2 493.1	5 377.7	55.5	215.9	340.3	6.0	5 718.0	59.0	3 977.4	9 695.4
2015											
January	2 837.5	2 402.8	5 240.3	54.0	235.3	375.6	6.7	5 615.9	57.8	4 093.6	9 709.5
February	2 890.8	2 479.2	5 370.0	55.2	234.5	391.1	6.8	5 761.1	59.2	3 962.5	9 723.6
March	2 842.7	2 510.6	5 353.3	55.0	224.6	380.0	6.6	5 733.3	58.9	4 004.4	9 737.6
April	2 867.8	2 501.9	5 369.7	55.1	217.1	356.9	6.2	5 726.6	58.7	4 022.0	9 748.6
May	2 896.8	2 520.3	5 417.1	55.5	202.4	340.2	5.9	5 757.4	59.0	4 002.2	9 759.6
June	2 898.0	2 517.1	5 415.1	55.4	218.2	336.1	5.8	5 751.2	58.9	4 019.3	9 770.6
July	2 924.6	2 490.4	5 415.0	55.4	234.0	364.9	6.3	5 779.8	59.1	4 003.1	9 782.9
August	2 873.1	2 531.3	5 404.4	55.2	205.7	343.1	6.0	5 747.5	58.7	4 047.7	9 795.3
September	2 915.6	2 522.8	5 438.3	55.5	213.4	337.4	5.8	5 775.7	58.9	4 031.8	9 807.6
October	2 906.7	2 577.9	5 484.6	55.9	202.2	324.6	5.6	5 809.2	59.2	4 009.8	9 819.0

	EMPLOYED			UNEMPLOYED		LABOUR FORCE	
	Full-time	Total	Employment to population ratio	Total	Unemployment rate	Total	Participation rate
TREND							
New South Wales	2 654.3	3 754.5	60.5	227.9	5.7	3 982.4	64.2
Victoria	1 968.0	2 956.3	60.6	187.1	6.0	3 143.4	64.5
Queensland	1 639.7	2 359.8	61.5	157.8	6.3	2 517.7	65.6
South Australia	522.7	802.0	57.3	67.2	7.7	869.2	62.1
Western Australia	955.6	1 358.1	64.5	92.2	6.4	1 450.3	68.9
Tasmania	157.4	241.6	57.2	16.1	6.2	257.7	61.0
Northern Territory	109.4	134.4	72.0	6.4	4.5	140.7	75.4
Australian Capital Territory	152.7	208.3	66.6	11.3	5.1	219.6	70.2
Australia	8 158.1	11 815.4	61.1	764.9	6.1	12 580.3	65.0
SEASONALLY ADJUSTED							
New South Wales	2 669.6	3 757.9	60.5	217.9	5.5	3 975.7	64.0
Victoria	1 972.8	2 970.4	60.9	174.8	5.6	3 145.2	64.5
Queensland	1 643.4	2 366.7	61.6	156.0	6.2	2 522.7	65.7
South Australia	519.4	803.6	57.4	65.3	7.5	869.0	62.0
Western Australia	955.4	1 363.3	64.8	93.4	6.4	1 456.7	69.2
Tasmania	156.4	240.3	56.9	16.7	6.5	257.0	60.8
Australia	8 171.6	11 838.2	61.2	739.5	5.9	12 577.8	65.0
ORIGINAL							
New South Wales	2 644.8	3 759.3	60.5	213.8	5.4	3 973.1	64.0
Victoria	1 971.2	2 974.5	61.0	168.9	5.4	3 143.4	64.4
Queensland	1 648.7	2 383.8	62.1	149.2	5.9	2 533.0	65.9
South Australia	515.0	801.6	57.2	65.2	7.5	866.9	61.9
Western Australia	950.9	1 361.8	64.7	86.7	6.0	1 448.4	68.8
Tasmania	154.8	240.4	56.9	16.2	6.3	256.7	60.7
Northern Territory	108.8	133.9	71.8	4.8	3.4	138.7	74.4
Australian Capital Territory	152.7	206.3	65.9	10.6	4.9	216.8	69.3
Australia	8 146.9	11 861.5	61.3	715.4	5.7	12 576.9	65.0

	EMPLOYED FULL-TIME		EMPLOYED TOTAL		UNEMPLOYED TOTAL		UNEMPLOYMENT RATE		PARTICIPATION RATE		CIVILIAN POPULATION AGED 15 YEARS AND OVER
	Seasonally adjusted		Seasonally adjusted		Seasonally adjusted		Seasonally adjusted		Seasonally adjusted		Original
	Trend		Trend		Trend		Trend		Trend		
	'000	'000	'000	'000	'000	'000	%	%	%	%	
PERSONS											
October 2012	2 522.5	2 539.3	3 562.6	3 570.2	188.4	190.5	5.0	5.1	63.2	63.4	5 935.7
October 2013	2 491.2	2 490.4	3 583.4	3 581.1	220.5	222.2	5.8	5.8	63.2	63.1	6 023.2
2014											
October	2 530.2	2 524.4	3 624.2	3 620.8	227.9	223.9	5.9	5.8	63.0	62.9	6 116.0
November	2 528.0	2 529.5	3 626.3	3 643.2	230.8	233.7	6.0	6.0	63.0	63.3	6 123.5
December	2 528.4	2 538.1	3 628.6	3 634.9	233.5	227.4	6.0	5.9	63.0	63.0	6 131.0
2015											
January	2 532.4	2 510.5	3 632.9	3 617.0	234.9	241.2	6.1	6.3	63.0	62.8	6 140.3
February	2 540.7	2 550.3	3 640.4	3 630.4	234.7	239.8	6.1	6.2	63.0	62.9	6 149.5
March	2 553.4	2 562.2	3 652.5	3 658.6	233.3	230.5	6.0	5.9	63.1	63.1	6 158.8
April	2 569.2	2 554.1	3 668.5	3 670.0	232.1	232.1	6.0	5.9	63.3	63.3	6 165.8
May	2 586.4	2 581.4	3 687.0	3 687.9	231.4	225.2	5.9	5.8	63.5	63.4	6 172.7
June	2 603.3	2 614.3	3 704.9	3 700.9	231.3	228.6	5.9	5.8	63.7	63.6	6 179.7
July	2 618.4	2 628.7	3 720.3	3 728.0	231.3	235.6	5.9	5.9	63.9	64.1	6 187.6
August	2 632.1	2 634.7	3 733.8	3 739.0	230.8	237.6	5.8	6.0	64.0	64.2	6 195.5
September	2 644.1	2 621.7	3 745.3	3 739.1	229.6	231.2	5.8	5.8	64.1	64.0	6 203.4
October	2 654.3	2 669.6	3 754.5	3 757.9	227.9	217.9	5.7	5.5	64.2	64.0	6 211.5
MALES											
October 2012	1 618.7	1 638.6	1 934.5	1 941.7	106.9	103.9	5.2	5.1	70.0	70.2	2 915.6
October 2013	1 584.0	1 582.6	1 938.3	1 941.7	119.5	121.0	5.8	5.9	69.6	69.8	2 956.6
2014											
October	1 635.9	1 629.2	1 968.4	1 959.9	119.4	115.8	5.7	5.6	69.5	69.1	3 002.4
November	1 634.7	1 642.5	1 968.1	1 981.4	122.1	125.1	5.8	5.9	69.5	70.1	3 006.1
December	1 633.4	1 646.5	1 967.9	1 973.3	124.9	120.8	6.0	5.8	69.5	69.6	3 009.8
2015											
January	1 632.8	1 611.7	1 969.7	1 956.8	126.3	133.1	6.0	6.4	69.5	69.3	3 014.5
February	1 633.5	1 636.7	1 974.0	1 963.9	125.6	127.1	6.0	6.1	69.5	69.3	3 019.2
March	1 636.2	1 645.8	1 980.9	1 985.4	123.2	123.6	5.9	5.9	69.6	69.7	3 023.9
April	1 640.8	1 629.1	1 989.4	1 994.4	120.0	119.6	5.7	5.7	69.7	69.8	3 027.5
May	1 646.6	1 645.7	1 997.9	2 001.3	117.3	113.4	5.5	5.4	69.8	69.8	3 031.0
June	1 652.6	1 657.1	2 004.9	2 004.0	115.8	113.6	5.5	5.4	69.9	69.8	3 034.5
July	1 657.7	1 665.0	2 009.4	2 009.2	115.4	115.0	5.4	5.4	69.9	69.9	3 038.6
August	1 662.5	1 667.0	2 013.0	2 017.1	115.5	118.4	5.4	5.5	70.0	70.2	3 042.6
September	1 667.1	1 643.2	2 016.0	2 009.5	115.7	117.4	5.4	5.5	70.0	69.8	3 046.7
October	1 671.8	1 688.1	2 018.3	2 021.8	115.9	114.1	5.4	5.3	70.0	70.0	3 050.7
FEMALES											
October 2012	903.8	900.7	1 628.1	1 628.5	81.5	86.7	4.8	5.1	56.6	56.8	3 020.1
October 2013	907.2	907.8	1 645.0	1 639.4	101.0	101.1	5.8	5.8	56.9	56.8	3 066.5
2014											
October	894.4	895.2	1 655.8	1 660.9	108.4	108.1	6.1	6.1	56.7	56.8	3 113.6
November	893.3	887.1	1 658.2	1 661.7	108.7	108.6	6.1	6.1	56.7	56.8	3 117.4
December	895.0	891.6	1 660.7	1 661.6	108.6	106.6	6.1	6.0	56.7	56.6	3 121.2
2015											
January	899.6	898.7	1 663.2	1 660.2	108.6	108.1	6.1	6.1	56.7	56.6	3 125.8
February	907.2	913.6	1 666.4	1 666.5	109.1	112.7	6.1	6.3	56.7	56.8	3 130.3
March	917.2	916.4	1 671.5	1 673.1	110.2	106.9	6.2	6.0	56.8	56.8	3 134.9
April	928.4	925.0	1 679.1	1 675.6	112.1	112.5	6.3	6.3	57.1	57.0	3 138.3
May	939.8	935.7	1 689.0	1 686.7	114.1	111.9	6.3	6.2	57.4	57.2	3 141.7
June	950.6	957.2	1 700.1	1 696.9	115.5	114.9	6.4	6.3	57.7	57.6	3 145.2
July	960.7	963.8	1 710.9	1 718.8	115.9	120.6	6.3	6.6	58.0	58.4	3 149.0
August	969.5	967.7	1 720.8	1 721.9	115.3	119.1	6.3	6.5	58.2	58.4	3 152.9
September	977.0	978.5	1 729.4	1 729.6	114.0	113.7	6.2	6.2	58.4	58.4	3 156.7
October	982.5	981.5	1 736.2	1 736.0	111.9	103.8	6.1	5.6	58.5	58.2	3 160.8

LABOUR FORCE STATUS (AGED 15 YEARS AND OVER)—Victoria

	EMPLOYED FULL-TIME		EMPLOYED TOTAL		UNEMPLOYED TOTAL		UNEMPLOYMENT RATE		PARTICIPATION RATE		CIVILIAN POPULATION AGED 15 YEARS AND OVER

	<i>Trend</i>	<i>Seasonally adjusted</i>	<i>Trend</i>	<i>Seasonally adjusted</i>	<i>Trend</i>	<i>Seasonally adjusted</i>	<i>Trend</i>	<i>Seasonally adjusted</i>	<i>Trend</i>	<i>Seasonally adjusted</i>	<i>Original</i>
	'000	'000	'000	'000	'000	'000	%	%	%	%	'000
PERSONS											
October 2012	1 947.5	1 951.1	2 834.4	2 837.8	165.6	161.5	5.5	5.4	64.9	64.9	4 621.1
October 2013	1 953.2	1 959.4	2 861.6	2 865.7	182.3	183.5	6.0	6.0	64.7	64.8	4 705.3
2014											
October	1 957.1	1 952.4	2 894.4	2 882.7	210.0	211.0	6.8	6.8	64.8	64.6	4 789.7
November	1 960.2	1 957.7	2 904.7	2 897.1	207.0	209.2	6.7	6.7	64.9	64.8	4 796.2
December	1 964.1	1 968.3	2 916.5	2 927.4	203.0	200.0	6.5	6.4	64.9	65.1	4 802.6
2015											
January	1 967.1	1 965.4	2 927.9	2 924.8	198.6	203.5	6.4	6.5	65.0	65.0	4 811.5
February	1 968.7	1 969.1	2 937.6	2 940.4	194.8	187.4	6.2	6.0	65.0	64.9	4 820.4
March	1 969.1	1 976.8	2 944.1	2 950.2	192.1	193.9	6.1	6.2	65.0	65.1	4 829.2
April	1 968.2	1 967.3	2 946.7	2 944.1	191.1	193.1	6.1	6.2	64.9	64.9	4 835.7
May	1 966.8	1 960.7	2 946.9	2 948.0	191.6	187.4	6.1	6.0	64.8	64.8	4 842.2
June	1 966.0	1 958.6	2 946.9	2 942.9	192.2	187.9	6.1	6.0	64.7	64.6	4 848.7
July	1 965.8	1 980.2	2 947.9	2 951.4	192.1	201.9	6.1	6.4	64.7	64.9	4 856.3
August	1 966.2	1 961.0	2 950.0	2 945.7	191.1	189.2	6.1	6.0	64.6	64.5	4 863.8
September	1 966.8	1 962.0	2 952.8	2 944.3	189.2	196.9	6.0	6.3	64.5	64.5	4 871.4
October	1 968.0	1 972.8	2 956.3	2 970.4	187.1	174.8	6.0	5.6	64.5	64.5	4 878.2
MALES											
October 2012	1 264.4	1 264.0	1 528.2	1 538.2	87.0	80.2	5.4	5.0	71.3	71.5	2 264.9
October 2013	1 271.0	1 270.6	1 538.3	1 540.4	98.8	101.3	6.0	6.2	71.0	71.2	2 304.8
2014											
October	1 259.4	1 253.5	1 561.3	1 552.9	112.5	111.5	6.7	6.7	71.3	70.9	2 346.7
November	1 264.2	1 259.4	1 567.1	1 568.6	110.9	113.0	6.6	6.7	71.4	71.6	2 349.8
December	1 270.3	1 273.7	1 574.0	1 571.3	108.7	105.2	6.5	6.3	71.5	71.2	2 353.0
2015											
January	1 276.2	1 277.7	1 581.2	1 580.3	106.3	109.8	6.3	6.5	71.6	71.7	2 357.4
February	1 281.1	1 282.5	1 587.7	1 590.7	103.8	101.1	6.1	6.0	71.6	71.6	2 361.8
March	1 284.8	1 290.1	1 592.7	1 602.4	100.8	101.2	6.0	5.9	71.6	72.0	2 366.1
April	1 286.8	1 283.7	1 595.6	1 588.6	98.1	101.1	5.8	6.0	71.5	71.3	2 369.5
May	1 287.5	1 284.4	1 596.8	1 595.5	96.2	94.7	5.7	5.6	71.3	71.2	2 372.8
June	1 288.0	1 284.2	1 597.2	1 595.2	95.2	92.8	5.6	5.5	71.2	71.0	2 376.1
July	1 288.7	1 298.9	1 597.7	1 603.7	95.1	93.8	5.6	5.5	71.1	71.3	2 380.0
August	1 289.5	1 286.8	1 598.6	1 599.2	95.5	91.5	5.6	5.4	71.1	70.9	2 383.8
September	1 290.2	1 284.0	1 599.4	1 590.6	95.9	106.7	5.7	6.3	71.0	71.1	2 387.6
October	1 291.2	1 295.2	1 600.9	1 606.3	96.5	92.5	5.7	5.4	71.0	71.1	2 391.0
FEMALES											
October 2012	683.1	687.1	1 306.2	1 299.6	78.6	81.2	5.7	5.9	58.8	58.6	2 356.2
October 2013	682.2	688.7	1 323.3	1 325.3	83.5	82.2	5.9	5.8	58.6	58.6	2 400.4
2014											
October	697.7	698.9	1 333.1	1 329.7	97.5	99.5	6.8	7.0	58.6	58.5	2 443.1
November	696.0	698.3	1 337.6	1 328.5	96.1	96.2	6.7	6.8	58.6	58.2	2 446.4
December	693.8	694.7	1 342.4	1 356.1	94.3	94.8	6.6	6.5	58.6	59.2	2 449.6
2015											
January	690.9	687.7	1 346.7	1 344.5	92.3	93.7	6.4	6.5	58.6	58.6	2 454.1
February	687.5	686.6	1 349.9	1 349.7	91.0	86.3	6.3	6.0	58.6	58.4	2 458.6
March	684.3	686.7	1 351.4	1 347.9	91.2	92.7	6.3	6.4	58.6	58.5	2 463.1
April	681.5	683.6	1 351.1	1 355.5	93.0	92.0	6.4	6.4	58.6	58.7	2 466.3
May	679.4	676.3	1 350.1	1 352.6	95.4	92.7	6.6	6.4	58.5	58.5	2 469.4
June	678.0	674.4	1 349.7	1 347.7	97.0	95.1	6.7	6.6	58.5	58.4	2 472.6
July	677.1	681.3	1 350.2	1 347.7	97.0	108.1	6.7	7.4	58.4	58.8	2 476.3
August	676.7	674.2	1 351.4	1 346.5	95.6	97.8	6.6	6.8	58.3	58.2	2 480.1
September	676.6	678.0	1 353.4	1 353.6	93.2	90.2	6.4	6.2	58.3	58.1	2 483.8
October	676.8	677.6	1 355.4	1 364.1	90.6	82.3	6.3	5.7	58.2	58.2	2 487.2

	EMPLOYED FULL-TIME		EMPLOYED TOTAL		UNEMPLOYED TOTAL		UNEMPLOYMENT RATE		PARTICIPATION RATE		CIVILIAN POPULATION AGED 15 YEARS AND OVER
	Trend	Seasonally adjusted	Trend	Seasonally adjusted	Trend	Seasonally adjusted	Trend	Seasonally adjusted	Trend	Seasonally adjusted	Original
	'000	'000	'000	'000	'000	'000	%	%	%	%	'000
PERSONS											
October 2012	1 642.0	1 637.0	2 283.1	2 269.7	146.5	145.3	6.0	6.0	66.3	65.9	3 666.5
October 2013	1 639.5	1 637.7	2 309.9	2 310.7	142.3	143.3	5.8	5.8	65.7	65.8	3 731.0
2014											
October	1 616.0	1 618.3	2 312.3	2 300.0	165.1	175.5	6.7	7.1	65.4	65.4	3 786.5
November	1 618.8	1 608.0	2 311.0	2 301.7	163.8	167.6	6.6	6.8	65.3	65.2	3 790.0
December	1 623.9	1 641.0	2 312.4	2 324.8	162.7	151.4	6.6	6.1	65.2	65.3	3 793.5
2015											
January	1 630.7	1 624.5	2 316.0	2 316.6	161.9	160.6	6.5	6.5	65.2	65.2	3 798.2
February	1 638.1	1 635.5	2 320.6	2 327.6	161.4	164.0	6.5	6.6	65.3	65.5	3 802.8
March	1 644.3	1 639.9	2 325.0	2 315.9	160.9	162.6	6.5	6.6	65.3	65.1	3 807.5
April	1 648.1	1 650.8	2 328.9	2 323.4	160.6	165.4	6.5	6.6	65.3	65.3	3 812.3
May	1 649.2	1 660.4	2 333.1	2 342.2	160.2	157.9	6.4	6.3	65.3	65.5	3 817.0
June	1 648.1	1 655.4	2 338.5	2 340.9	159.3	152.2	6.4	6.1	65.4	65.2	3 821.7
July	1 645.7	1 631.2	2 344.3	2 337.9	158.7	161.8	6.3	6.5	65.4	65.3	3 826.9
August	1 643.2	1 640.2	2 350.0	2 349.5	158.4	161.4	6.3	6.4	65.5	65.5	3 832.0
September	1 641.3	1 643.4	2 355.5	2 354.6	158.1	158.4	6.3	6.3	65.5	65.5	3 837.2
October	1 639.7	1 643.4	2 359.8	2 366.7	157.8	156.0	6.3	6.2	65.6	65.7	3 841.3
MALES											
October 2012	1 054.0	1 048.9	1 237.5	1 225.5	80.4	81.8	6.1	6.3	72.8	72.2	1 809.5
October 2013	1 045.9	1 044.4	1 237.8	1 237.7	78.4	76.8	6.0	5.8	71.6	71.5	1 838.5
2014											
October	1 025.8	1 029.1	1 231.8	1 233.9	87.7	91.5	6.6	6.9	70.7	71.1	1 865.4
November	1 025.8	1 027.1	1 231.8	1 228.0	87.5	90.1	6.6	6.8	70.7	70.6	1 867.0
December	1 027.1	1 029.9	1 232.8	1 236.8	87.7	80.4	6.6	6.1	70.7	70.5	1 868.6
2015											
January	1 029.9	1 019.7	1 234.3	1 230.7	88.5	89.7	6.7	6.8	70.7	70.6	1 870.8
February	1 033.3	1 033.6	1 235.8	1 239.2	89.7	92.8	6.8	7.0	70.8	71.1	1 873.0
March	1 036.3	1 041.8	1 237.2	1 237.7	90.9	89.7	6.8	6.8	70.8	70.8	1 875.3
April	1 038.1	1 036.1	1 238.3	1 236.4	92.0	92.5	6.9	7.0	70.9	70.8	1 877.6
May	1 038.6	1 049.6	1 239.8	1 243.2	92.9	92.3	7.0	6.9	70.9	71.0	1 879.8
June	1 038.2	1 037.0	1 241.9	1 238.6	93.1	92.9	7.0	7.0	70.9	70.7	1 882.1
July	1 037.8	1 023.9	1 244.5	1 241.3	92.9	93.6	6.9	7.0	71.0	70.8	1 884.7
August	1 038.1	1 038.6	1 247.5	1 250.2	92.5	94.5	6.9	7.0	71.0	71.3	1 887.3
September	1 039.0	1 046.5	1 250.4	1 251.8	92.0	91.2	6.9	6.8	71.1	71.1	1 889.8
October	1 040.4	1 041.6	1 253.0	1 254.3	91.2	89.1	6.8	6.6	71.1	71.0	1 891.7
FEMALES											
October 2012	587.9	588.0	1 045.6	1 044.2	66.0	63.5	5.9	5.7	59.9	59.6	1 857.0
October 2013	593.6	593.3	1 072.1	1 073.1	63.9	66.5	5.6	5.8	60.0	60.2	1 892.4
2014											
October	590.2	589.2	1 080.5	1 066.2	77.4	84.0	6.7	7.3	60.3	59.9	1 921.1
November	593.0	580.9	1 079.2	1 073.7	76.3	77.4	6.6	6.7	60.1	59.9	1 923.0
December	596.8	611.1	1 079.6	1 088.0	75.0	71.0	6.5	6.1	60.0	60.2	1 924.9
2015											
January	600.9	604.8	1 081.7	1 085.9	73.4	70.9	6.4	6.1	59.9	60.0	1 927.4
February	604.8	602.0	1 084.7	1 088.4	71.7	71.2	6.2	6.1	59.9	60.1	1 929.8
March	608.0	598.1	1 087.8	1 078.3	70.1	72.9	6.1	6.3	59.9	59.6	1 932.3
April	610.0	614.6	1 090.6	1 087.0	68.6	73.0	5.9	6.3	59.9	60.0	1 934.7
May	610.6	610.7	1 093.3	1 099.0	67.3	65.6	5.8	5.6	59.9	60.1	1 937.2
June	609.9	618.4	1 096.6	1 102.3	66.3	59.2	5.7	5.1	59.9	59.9	1 939.6
July	607.9	607.3	1 099.8	1 096.7	65.8	68.2	5.6	5.9	60.0	60.0	1 942.2
August	605.1	601.6	1 102.5	1 099.3	65.8	66.9	5.6	5.7	60.1	60.0	1 944.8
September	602.3	596.9	1 105.1	1 102.8	66.1	67.2	5.6	5.7	60.2	60.1	1 947.4
October	599.2	601.9	1 106.9	1 112.3	66.6	66.9	5.7	5.7	60.2	60.5	1 949.5

	EMPLOYED FULL-TIME		EMPLOYED TOTAL		UNEMPLOYED TOTAL		UNEMPLOYMENT RATE		PARTICIPATION RATE		CIVILIAN POPULATION AGED 15 YEARS AND OVER
	<i>Trend</i>	<i>Seasonally adjusted</i>	<i>Trend</i>	<i>Seasonally adjusted</i>	<i>Trend</i>	<i>Seasonally adjusted</i>	<i>Trend</i>	<i>Seasonally adjusted</i>	<i>Trend</i>	<i>Seasonally adjusted</i>	<i>Original</i>
	'000	'000	'000	'000	'000	'000	%	%	%	%	'000
PERSONS											
October 2012	535.4	538.2	807.0	809.2	47.7	48.1	5.6	5.6	62.7	62.9	1 362.4
October 2013	526.4	524.4	797.4	796.8	56.6	56.8	6.6	6.6	62.1	62.1	1 375.0
2014											
October	537.5	545.4	801.8	800.2	56.9	57.2	6.6	6.7	61.9	61.8	1 388.0
November	536.5	535.8	800.5	801.0	57.4	57.3	6.7	6.7	61.8	61.8	1 388.9
December	535.5	527.8	799.8	797.2	57.9	56.4	6.8	6.6	61.7	61.4	1 389.8
2015											
January	534.6	535.4	800.1	802.3	58.6	62.9	6.8	7.3	61.7	62.2	1 391.2
February	533.4	532.8	801.2	797.4	59.5	59.3	6.9	6.9	61.8	61.5	1 392.7
March	531.9	537.0	802.8	804.3	61.2	55.7	7.1	6.5	62.0	61.7	1 394.1
April	530.3	533.2	804.1	804.7	63.5	63.0	7.3	7.3	62.2	62.2	1 395.1
May	528.5	525.8	804.8	807.9	65.7	67.1	7.5	7.7	62.4	62.7	1 396.0
June	526.5	519.7	804.8	803.0	67.5	71.1	7.7	8.1	62.4	62.6	1 397.0
July	525.1	526.4	804.2	803.7	68.4	68.7	7.8	7.9	62.4	62.4	1 397.9
August	524.1	528.4	803.4	806.4	68.5	69.3	7.9	7.9	62.3	62.6	1 398.8
September	523.2	524.7	802.6	798.1	68.2	66.3	7.8	7.7	62.2	61.7	1 399.8
October	522.7	519.4	802.0	803.6	67.2	65.3	7.7	7.5	62.1	62.0	1 400.7
MALES											
October 2012	353.4	353.4	432.3	432.7	26.5	26.2	5.8	5.7	68.6	68.6	668.6
October 2013	346.1	346.3	429.5	427.0	32.3	33.5	7.0	7.3	68.5	68.3	674.5
2014											
October	355.0	357.5	432.6	433.0	30.4	31.3	6.6	6.7	68.0	68.2	681.1
November	354.2	354.3	431.6	432.0	30.4	29.8	6.6	6.5	67.8	67.7	681.6
December	353.7	348.5	431.0	430.2	30.5	29.6	6.6	6.4	67.6	67.4	682.0
2015											
January	353.4	352.7	430.8	429.1	31.0	33.6	6.7	7.3	67.6	67.8	682.8
February	353.1	353.7	430.8	430.1	31.8	31.7	6.9	6.9	67.7	67.6	683.5
March	352.2	356.4	430.6	432.1	33.2	29.4	7.1	6.4	67.8	67.4	684.3
April	350.7	352.5	429.9	430.9	35.2	35.3	7.6	7.6	67.9	68.1	684.8
May	348.4	347.4	428.7	432.2	37.2	36.9	8.0	7.9	68.0	68.5	685.2
June	345.9	341.4	427.3	424.6	38.6	42.4	8.3	9.1	67.9	68.1	685.7
July	343.6	344.4	426.0	422.6	39.4	39.6	8.5	8.6	67.8	67.4	686.2
August	341.9	342.6	425.1	426.6	39.5	39.5	8.5	8.5	67.7	67.9	686.7
September	340.4	342.4	424.6	424.4	39.1	39.2	8.4	8.5	67.5	67.5	687.2
October	339.5	337.8	424.5	426.3	38.2	35.4	8.3	7.7	67.3	67.1	687.7
FEMALES											
October 2012	182.0	184.8	374.7	376.5	21.2	21.9	5.4	5.5	57.1	57.4	693.8
October 2013	180.3	178.1	367.9	369.8	24.3	23.2	6.2	5.9	56.0	56.1	700.5
2014											
October	182.5	187.9	369.2	367.3	26.5	25.9	6.7	6.6	56.0	55.6	706.8
November	182.2	181.6	368.8	369.1	27.0	27.6	6.8	6.9	56.0	56.1	707.3
December	181.8	179.3	368.8	367.0	27.4	26.8	6.9	6.8	56.0	55.6	707.7
2015											
January	181.2	182.8	369.3	373.2	27.6	29.3	7.0	7.3	56.0	56.8	708.4
February	180.3	179.1	370.4	367.3	27.7	27.6	7.0	7.0	56.1	55.7	709.1
March	179.7	180.6	372.2	372.2	28.0	26.3	7.0	6.6	56.4	56.1	709.8
April	179.6	180.7	374.2	373.8	28.3	27.7	7.0	6.9	56.7	56.5	710.3
May	180.0	178.4	376.1	375.7	28.6	30.2	7.1	7.5	56.9	57.1	710.8
June	180.7	178.3	377.5	378.4	28.8	28.7	7.1	7.0	57.1	57.2	711.3
July	181.5	182.0	378.2	381.1	29.0	29.1	7.1	7.1	57.2	57.6	711.7
August	182.2	185.8	378.3	379.8	29.1	29.8	7.1	7.3	57.2	57.5	712.1
September	182.8	182.4	378.0	373.7	29.1	27.1	7.1	6.8	57.1	56.2	712.6
October	183.2	181.6	377.5	377.4	29.0	29.9	7.1	7.4	57.0	57.1	713.0

	EMPLOYED FULL-TIME		EMPLOYED TOTAL		UNEMPLOYED TOTAL		UNEMPLOYMENT RATE		PARTICIPATION RATE		CIVILIAN POPULATION AGED 15 YEARS AND OVER
	Trend	Seasonally adjusted	Trend	Seasonally adjusted	Trend	Seasonally adjusted	Trend	Seasonally adjusted	Trend	Seasonally adjusted	Original
	'000	'000	'000	'000	'000	'000	%	%	%	%	'000
PERSONS											
October 2012	959.0	959.7	1 323.3	1 323.4	58.6	65.4	4.2	4.7	69.4	69.8	1 990.1
October 2013	948.4	948.7	1 327.6	1 332.3	62.3	58.2	4.5	4.2	68.1	68.1	2 041.7
2014											
October	959.1	957.4	1 346.3	1 348.9	74.9	74.0	5.3	5.2	68.5	68.6	2 075.2
November	961.2	969.6	1 348.5	1 353.8	77.1	74.8	5.4	5.2	68.6	68.8	2 077.0
December	961.8	959.4	1 350.2	1 344.8	79.0	84.0	5.5	5.9	68.7	68.7	2 078.8
2015											
January	961.0	961.3	1 351.5	1 349.3	79.9	78.8	5.6	5.5	68.8	68.6	2 081.7
February	959.1	959.9	1 352.2	1 354.8	79.9	82.0	5.6	5.7	68.7	68.9	2 084.5
March	956.8	957.6	1 352.9	1 358.0	79.8	79.2	5.6	5.5	68.6	68.9	2 087.3
April	955.0	947.6	1 353.6	1 346.9	80.3	81.1	5.6	5.7	68.6	68.3	2 089.9
May	954.3	959.6	1 354.2	1 355.4	81.6	73.4	5.7	5.1	68.6	68.3	2 092.5
June	954.3	954.8	1 354.6	1 355.8	83.9	85.1	5.8	5.9	68.7	68.8	2 095.1
July	954.5	948.4	1 355.1	1 354.3	86.4	92.7	6.0	6.4	68.7	69.0	2 097.7
August	954.8	961.6	1 355.9	1 360.0	88.7	88.9	6.1	6.1	68.8	69.0	2 100.4
September	955.1	952.7	1 356.8	1 348.5	90.7	87.2	6.3	6.1	68.8	68.3	2 103.0
October	955.6	955.4	1 358.1	1 363.3	92.2	93.4	6.4	6.4	68.9	69.2	2 105.1
MALES											
October 2012	642.3	643.6	740.4	742.3	30.3	32.6	3.9	4.2	76.8	77.3	1 003.1
October 2013	634.9	633.3	747.4	744.7	35.8	36.8	4.6	4.7	76.1	76.0	1 028.8
2014											
October	643.7	637.9	752.3	753.6	41.7	42.7	5.3	5.4	76.0	76.2	1 044.9
November	646.6	655.1	754.8	758.7	42.6	42.3	5.3	5.3	76.3	76.6	1 045.8
December	647.9	646.8	757.1	753.7	43.4	45.2	5.4	5.7	76.5	76.3	1 046.6
2015											
January	647.1	650.4	758.4	758.4	44.1	41.1	5.5	5.1	76.6	76.3	1 048.0
February	644.6	644.9	758.5	760.9	44.8	46.1	5.6	5.7	76.5	76.9	1 049.5
March	640.9	642.9	758.0	760.9	45.9	46.0	5.7	5.7	76.5	76.8	1 050.9
April	637.5	631.3	757.5	754.7	47.4	47.1	5.9	5.9	76.5	76.2	1 052.2
May	635.7	633.9	757.1	754.5	49.0	47.1	6.1	5.9	76.5	76.1	1 053.5
June	635.8	637.7	757.1	755.9	50.4	50.2	6.2	6.2	76.5	76.4	1 054.8
July	637.2	636.3	757.4	760.7	51.4	55.1	6.4	6.8	76.6	77.3	1 056.1
August	639.1	637.5	757.9	758.1	52.0	53.2	6.4	6.6	76.6	76.7	1 057.4
September	641.0	643.5	758.3	758.0	52.4	49.3	6.5	6.1	76.6	76.3	1 058.7
October	643.2	644.4	758.8	757.8	52.5	52.1	6.5	6.4	76.6	76.4	1 059.7
FEMALES											
October 2012	316.7	316.1	582.9	581.1	28.4	32.8	4.6	5.3	61.9	62.2	987.0
October 2013	313.5	315.4	580.3	587.6	26.5	21.5	4.4	3.5	59.9	60.1	1 012.9
2014											
October	315.4	319.5	594.0	595.3	33.2	31.3	5.3	5.0	60.9	60.8	1 030.3
November	314.5	314.5	593.6	595.1	34.5	32.4	5.5	5.2	60.9	60.9	1 031.3
December	313.8	312.6	593.1	591.1	35.6	38.8	5.7	6.2	60.9	61.0	1 032.2
2015											
January	313.8	310.9	593.1	590.9	35.8	37.7	5.7	6.0	60.8	60.8	1 033.6
February	314.5	315.0	593.7	593.9	35.1	35.9	5.6	5.7	60.8	60.8	1 035.0
March	315.9	314.7	594.9	597.1	34.0	33.2	5.4	5.3	60.7	60.8	1 036.4
April	317.6	316.3	596.2	592.2	32.9	34.0	5.2	5.4	60.6	60.3	1 037.7
May	318.6	325.7	597.1	600.9	32.6	26.3	5.2	4.2	60.6	60.4	1 039.0
June	318.4	317.1	597.5	599.9	33.5	34.9	5.3	5.5	60.6	61.0	1 040.2
July	317.3	312.1	597.7	593.5	35.0	37.6	5.5	6.0	60.7	60.6	1 041.6
August	315.8	324.1	598.0	601.9	36.7	35.7	5.8	5.6	60.9	61.1	1 043.0
September	314.1	309.2	598.5	590.5	38.3	37.9	6.0	6.0	61.0	60.2	1 044.3
October	312.4	311.0	599.3	605.5	39.7	41.2	6.2	6.4	61.2	61.9	1 045.4

	EMPLOYED FULL-TIME		EMPLOYED TOTAL		UNEMPLOYED TOTAL		UNEMPLOYMENT RATE		PARTICIPATION RATE		CIVILIAN POPULATION AGED 15 YEARS AND OVER
	<i>Trend</i>	<i>Seasonally adjusted</i>	<i>Trend</i>	<i>Seasonally adjusted</i>	<i>Trend</i>	<i>Seasonally adjusted</i>	<i>Trend</i>	<i>Seasonally adjusted</i>	<i>Trend</i>	<i>Seasonally adjusted</i>	<i>Original</i>
	'000	'000	'000	'000	'000	'000	%	%	%	%	'000
PERSONS											
October 2012	149.4	151.2	234.9	236.5	17.6	17.4	7.0	6.8	60.6	60.9	416.9
October 2013	146.5	145.5	229.9	230.6	19.8	19.6	7.9	7.8	59.7	59.8	418.4
2014											
October	152.3	153.0	240.0	239.7	18.0	17.1	7.0	6.7	61.4	61.1	420.5
November	153.2	153.3	240.7	243.3	17.6	17.8	6.8	6.8	61.4	62.1	420.6
December	153.9	154.2	240.9	241.1	17.3	17.1	6.7	6.6	61.3	61.4	420.7
2015											
January	154.3	154.4	240.6	240.2	17.1	16.9	6.6	6.6	61.2	61.1	421.0
February	154.2	153.6	239.9	239.7	17.2	16.9	6.7	6.6	61.0	60.9	421.4
March	153.9	155.5	239.2	239.3	17.3	16.9	6.8	6.6	60.9	60.8	421.7
April	153.8	153.9	238.9	238.3	17.4	18.6	6.8	7.2	60.8	60.9	421.8
May	154.0	151.9	239.2	238.2	17.4	17.7	6.8	6.9	60.8	60.7	421.9
June	154.5	153.7	239.8	240.2	17.1	16.6	6.7	6.5	60.9	60.9	422.0
July	155.3	155.4	240.4	239.8	16.8	16.9	6.5	6.6	60.9	60.8	422.1
August	156.1	158.1	241.0	242.8	16.5	16.6	6.4	6.4	61.0	61.4	422.3
September	156.8	157.1	241.4	241.7	16.3	15.6	6.3	6.0	61.0	60.9	422.4
October	157.4	156.4	241.6	240.3	16.1	16.7	6.2	6.5	61.0	60.8	422.6
MALES											
October 2012	100.6	102.3	127.3	128.8	9.4	8.9	6.9	6.5	66.4	66.9	205.9
October 2013	96.1	95.9	121.3	122.1	11.4	10.9	8.6	8.2	64.2	64.4	206.6
2014											
October	101.0	102.1	127.2	126.3	11.0	11.1	7.9	8.1	66.5	66.2	207.7
November	101.5	101.5	127.6	129.7	10.7	10.9	7.8	7.8	66.6	67.7	207.7
December	101.8	101.4	127.8	128.0	10.4	10.0	7.5	7.3	66.5	66.4	207.8
2015											
January	101.8	102.1	127.7	127.5	10.2	9.7	7.4	7.1	66.3	66.0	208.0
February	101.5	101.1	127.4	127.5	10.1	10.0	7.4	7.3	66.1	66.1	208.2
March	101.2	101.8	127.0	126.7	10.2	9.9	7.4	7.2	65.9	65.6	208.3
April	101.1	101.9	127.0	126.8	10.1	10.9	7.4	7.9	65.8	66.1	208.4
May	101.3	99.8	127.4	126.5	9.9	10.5	7.2	7.7	65.9	65.8	208.4
June	101.8	100.6	128.0	128.2	9.5	9.4	6.9	6.8	66.0	66.0	208.5
July	102.3	102.3	128.6	128.2	9.1	8.9	6.6	6.5	66.0	65.7	208.6
August	102.8	105.5	129.1	130.8	8.7	8.5	6.3	6.1	66.1	66.7	208.7
September	103.1	103.0	129.5	129.7	8.4	7.7	6.1	5.6	66.1	65.8	208.7
October	103.3	101.8	129.8	128.7	8.2	9.0	5.9	6.5	66.1	65.9	208.8
FEMALES											
October 2012	48.8	48.9	107.6	107.7	8.2	8.4	7.1	7.2	54.9	55.1	210.9
October 2013	50.5	49.6	108.7	108.5	8.5	8.7	7.2	7.5	55.3	55.4	211.8
2014											
October	51.3	50.9	112.8	113.3	7.0	6.0	5.8	5.1	56.3	56.1	212.8
November	51.7	51.8	113.1	113.6	6.8	6.9	5.7	5.7	56.4	56.6	212.8
December	52.2	52.8	113.2	113.2	6.8	7.1	5.7	5.9	56.3	56.5	212.9
2015											
January	52.5	52.3	112.9	112.7	6.9	7.2	5.8	6.0	56.2	56.3	213.1
February	52.7	52.5	112.5	112.3	7.0	6.9	5.9	5.8	56.1	55.9	213.2
March	52.7	53.7	112.2	112.6	7.2	7.0	6.0	5.8	56.0	56.1	213.4
April	52.7	52.1	111.9	111.5	7.3	7.7	6.1	6.5	55.9	55.9	213.4
May	52.6	52.1	111.8	111.7	7.4	7.2	6.2	6.1	55.9	55.7	213.4
June	52.8	53.2	111.8	112.0	7.6	7.3	6.4	6.1	55.9	55.9	213.5
July	53.0	53.0	111.8	111.6	7.7	8.0	6.5	6.7	56.0	56.0	213.5
August	53.4	52.6	111.8	112.0	7.8	8.1	6.5	6.7	56.0	56.2	213.6
September	53.7	54.1	111.8	112.0	7.9	7.8	6.6	6.5	56.0	56.1	213.7
October	54.1	54.7	111.9	111.6	7.9	7.7	6.6	6.5	56.0	55.8	213.8

	EMPLOYED FULL-TIME	EMPLOYED TOTAL	UNEMPLOYED TOTAL	UNEMPLOYMENT RATE	PARTICIPATION RATE	CIVILIAN POPULATION AGED 15 YEARS AND OVER
	<i>Trend</i>	<i>Trend</i>	<i>Trend</i>	<i>Trend</i>	<i>Trend</i>	<i>Original</i>
	'000	'000	'000	%	%	'000
PERSONS						
October 2012	104.5	128.1	5.3	4.0	74.6	178.8
October 2013	106.7	131.3	6.7	4.9	75.3	183.3
2014						
October	105.3	128.8	5.2	3.9	72.3	185.3
November	106.0	129.7	5.1	3.8	72.8	185.2
December	106.9	130.9	5.2	3.9	73.5	185.1
2015						
January	107.7	132.1	5.6	4.1	74.3	185.2
February	108.4	133.2	5.9	4.2	75.1	185.3
March	108.8	134.1	6.0	4.3	75.6	185.4
April	109.1	134.7	6.1	4.4	75.9	185.6
May	109.4	135.0	6.2	4.4	76.0	185.9
June	109.5	135.1	6.3	4.4	75.9	186.1
July	109.6	135.0	6.3	4.5	75.9	186.3
August	109.6	134.8	6.4	4.5	75.7	186.4
September	109.5	134.6	6.4	4.5	75.6	186.6
October	109.4	134.4	6.4	4.5	75.4	186.5
MALES						
October 2012	61.4	69.7	2.8	3.9	78.3	92.7
October 2013	64.1	72.6	3.7	4.8	79.7	95.7
2014						
October	63.7	70.9	3.2	4.3	76.3	97.1
November	63.8	71.2	3.1	4.2	76.6	97.0
December	64.0	71.6	3.2	4.3	77.1	97.0
2015						
January	64.2	72.0	3.4	4.5	77.7	97.0
February	64.5	72.5	3.5	4.7	78.4	97.1
March	64.8	73.0	3.6	4.7	78.8	97.1
April	65.0	73.4	3.6	4.7	79.2	97.3
May	65.3	73.8	3.6	4.7	79.5	97.4
June	65.5	74.0	3.6	4.7	79.6	97.6
July	65.6	74.2	3.6	4.6	79.6	97.6
August	65.7	74.3	3.4	4.4	79.6	97.7
September	65.8	74.4	3.3	4.2	79.5	97.7
October	65.9	74.5	3.1	4.0	79.4	97.7
FEMALES						
October 2012	43.1	58.4	2.5	4.1	70.7	86.1
October 2013	42.6	58.7	3.1	4.9	70.5	87.5
2014						
October	41.6	58.0	2.0	3.4	68.0	88.3
November	42.2	58.5	2.0	3.3	68.6	88.2
December	42.9	59.3	2.1	3.3	69.6	88.1
2015						
January	43.5	60.0	2.2	3.5	70.6	88.2
February	43.9	60.7	2.3	3.7	71.4	88.2
March	44.0	61.1	2.4	3.8	72.0	88.3
April	44.0	61.3	2.5	3.9	72.2	88.4
May	44.0	61.3	2.6	4.0	72.2	88.4
June	44.0	61.1	2.6	4.1	71.9	88.5
July	44.0	60.8	2.8	4.4	71.7	88.6
August	43.9	60.5	2.9	4.6	71.5	88.8
September	43.7	60.2	3.1	4.9	71.3	88.9
October	43.5	59.9	3.3	5.2	71.1	88.8

	EMPLOYED FULL-TIME	EMPLOYED TOTAL	UNEMPLOYED TOTAL	UNEMPLOYMENT RATE	PARTICIPATION RATE	CIVILIAN POPULATION AGED 15 YEARS AND OVER
	<i>Trend</i>	<i>Trend</i>	<i>Trend</i>	<i>Trend</i>	<i>Trend</i>	<i>Original</i>
	'000	'000	'000	%	%	'000
PERSONS						
October 2012	157.8	211.6	8.9	4.0	72.9	302.7
October 2013	152.1	209.8	8.6	4.0	71.3	306.3
2014						
October	155.0	208.0	10.7	4.9	70.7	309.5
November	154.2	207.8	10.6	4.8	70.5	309.8
December	153.4	208.0	10.2	4.7	70.4	310.1
2015						
January	153.0	208.3	9.9	4.5	70.3	310.5
February	153.1	208.7	9.6	4.4	70.2	311.0
March	153.5	209.0	9.4	4.3	70.1	311.4
April	154.0	209.2	9.4	4.3	70.2	311.6
May	154.4	209.5	9.6	4.4	70.3	311.7
June	154.2	209.5	9.9	4.5	70.3	311.8
July	153.8	209.3	10.3	4.7	70.3	312.1
August	153.3	208.9	10.7	4.9	70.3	312.4
September	153.0	208.6	11.0	5.0	70.2	312.7
October	152.7	208.3	11.3	5.1	70.2	313.0
MALES						
October 2012	90.1	108.2	5.0	4.4	76.6	147.8
October 2013	89.7	109.7	4.5	3.9	76.4	149.4
2014						
October	89.7	106.3	5.1	4.5	73.7	151.1
November	89.6	106.1	5.0	4.5	73.5	151.2
December	89.4	106.3	4.9	4.4	73.5	151.3
2015						
January	89.3	106.8	4.7	4.2	73.6	151.5
February	89.3	107.4	4.6	4.1	73.8	151.7
March	89.3	107.9	4.5	4.0	74.0	151.9
April	89.3	108.1	4.6	4.1	74.1	152.0
May	89.2	108.0	4.8	4.2	74.1	152.1
June	88.9	107.6	5.0	4.4	74.0	152.1
July	88.3	107.0	5.2	4.7	73.7	152.3
August	87.6	106.4	5.5	4.9	73.4	152.4
September	86.9	105.9	5.8	5.2	73.2	152.5
October	86.4	105.4	6.0	5.4	73.0	152.6
FEMALES						
October 2012	67.8	103.4	3.9	3.6	69.3	154.9
October 2013	62.4	100.1	4.1	4.0	66.5	156.8
2014						
October	65.3	101.6	5.7	5.3	67.7	158.4
November	64.6	101.7	5.5	5.2	67.6	158.6
December	64.0	101.7	5.4	5.0	67.4	158.7
2015						
January	63.7	101.5	5.2	4.9	67.1	159.0
February	63.8	101.3	5.0	4.7	66.7	159.2
March	64.2	101.1	4.9	4.6	66.5	159.5
April	64.7	101.2	4.8	4.5	66.4	159.6
May	65.1	101.5	4.8	4.5	66.6	159.6
June	65.4	101.9	4.9	4.6	66.8	159.7
July	65.5	102.2	5.0	4.7	67.1	159.9
August	65.7	102.5	5.2	4.8	67.3	160.0
September	66.0	102.7	5.3	4.9	67.4	160.2
October	66.3	102.9	5.3	4.9	67.5	160.4

	EMPLOYED				UNEMPLOYED				LABOUR FORCE
	Full-time	Part-time	Total	Employment to population ratio	Looked for full-time work	Looked for part-time work only	Total	Unemployment rate	Participation rate
				%					
	'000	'000	'000	%	'000	'000	'000	%	%
PERSONS									
October 2012	946.1	877.2	1 825.6	59.3	150.0	94.9	244.4	11.8	67.2
October 2013	878.1	925.2	1 804.7	58.3	160.4	98.5	257.7	12.5	66.6
2014									
October	871.2	923.8	1 794.5	57.6	161.5	126.1	288.9	13.9	66.8
November	869.9	927.8	1 796.1	57.6	163.3	125.9	289.4	13.9	67.0
December	868.8	932.0	1 798.0	57.7	165.4	124.6	289.4	13.8	67.1
2015									
January	867.8	936.0	1 800.7	57.7	166.4	123.0	288.3	13.8	67.1
February	867.6	939.4	1 804.2	57.8	165.8	121.7	286.6	13.7	67.1
March	868.4	942.6	1 809.1	57.9	164.3	121.4	285.2	13.6	67.1
April	870.0	945.6	1 814.8	58.1	162.9	122.0	285.2	13.6	67.2
May	871.7	949.2	1 820.8	58.3	162.1	122.6	285.7	13.6	67.4
June	872.5	953.8	1 826.3	58.4	161.5	122.1	285.0	13.5	67.5
July	871.9	958.9	1 830.6	58.5	160.8	120.9	283.0	13.4	67.6
August	870.5	964.3	1 834.7	58.6	159.7	119.2	279.7	13.2	67.6
September	869.0	969.4	1 838.7	58.7	158.1	117.3	275.3	13.0	67.5
October	867.4	974.1	1 842.2	58.8	156.3	115.3	270.7	12.8	67.5
MALES									
October 2012	568.4	367.1	935.5	59.5	94.6	43.9	138.6	12.9	68.3
October 2013	528.3	388.2	916.5	57.9	91.3	47.1	138.4	13.1	66.6
2014									
October	527.9	389.1	917.0	57.5	98.8	59.6	158.4	14.7	67.5
November	528.0	392.5	920.6	57.7	99.4	59.3	158.8	14.7	67.7
December	527.5	396.0	923.5	57.9	100.5	59.2	159.7	14.7	67.9
2015									
January	526.2	399.4	925.7	58.0	101.1	59.6	160.6	14.8	68.1
February	524.3	402.5	926.8	58.0	100.6	60.2	160.9	14.8	68.1
March	522.2	405.2	927.4	58.0	99.5	61.0	160.5	14.8	68.1
April	520.5	407.3	927.8	58.0	98.3	61.6	160.0	14.7	68.1
May	520.0	408.7	928.7	58.1	97.5	61.7	159.2	14.6	68.0
June	520.6	409.7	930.3	58.2	97.0	61.0	158.0	14.5	68.1
July	521.6	410.6	932.2	58.3	96.8	60.2	156.9	14.4	68.1
August	523.0	411.4	934.4	58.4	96.6	59.2	155.8	14.3	68.1
September	524.6	412.0	936.6	58.5	96.3	58.4	154.6	14.2	68.1
October	526.5	412.7	939.1	58.6	96.0	57.5	153.5	14.0	68.2
FEMALES									
October 2012	377.7	510.1	887.8	59.0	55.4	51.0	106.4	10.7	66.1
October 2013	349.8	536.9	886.8	58.5	69.1	51.4	120.5	12.0	66.5
2014									
October	343.3	534.7	878.0	57.7	62.7	66.5	129.2	12.8	66.2
November	341.9	535.3	877.1	57.6	63.9	66.6	130.4	12.9	66.2
December	341.3	535.9	877.2	57.6	64.9	65.4	130.3	12.9	66.2
2015									
January	341.6	536.6	878.2	57.6	65.3	63.4	128.7	12.8	66.1
February	343.3	537.0	880.2	57.7	65.2	61.4	126.6	12.6	66.1
March	346.2	537.4	883.6	57.9	64.8	60.4	125.2	12.4	66.1
April	349.5	538.4	887.9	58.2	64.6	60.4	125.0	12.3	66.4
May	351.7	540.5	892.2	58.5	64.5	60.9	125.4	12.3	66.7
June	351.9	544.1	896.0	58.7	64.5	61.1	125.5	12.3	66.9
July	350.2	548.4	898.6	58.9	64.0	60.8	124.8	12.2	67.0
August	347.5	552.9	900.4	58.9	63.1	60.0	123.1	12.0	67.0
September	344.3	557.3	901.7	59.0	61.8	58.9	120.7	11.8	66.9
October	340.9	561.4	902.3	59.0	60.4	57.9	118.2	11.6	66.7

	EMPLOYED				UNEMPLOYED				LABOUR FORCE
	Full-time	Part-time	Total	Employment to	Looked for full-time work	Looked for part-time work only	Total	Unemployment rate	Participation rate
				population ratio					
	'000	'000	'000	%	'000	'000	'000	%	%
PERSONS									
October 2012	952.8	867.9	1 824.3	59.3	150.2	96.9	246.8	11.9	67.2
October 2013	875.5	927.3	1 806.9	58.3	168.5	97.1	262.7	12.7	66.8
2014									
October	872.6	913.2	1 788.0	57.4	157.5	135.7	289.2	13.9	66.7
November	867.5	933.7	1 806.8	58.0	174.4	125.2	305.2	14.5	67.4
December	883.4	934.8	1 808.2	58.1	155.2	120.2	272.1	13.0	67.2
2015									
January	855.0	932.7	1 781.6	57.1	171.9	124.1	294.3	14.1	66.8
February	866.3	941.9	1 804.5	57.8	167.1	120.8	287.3	13.7	67.1
March	869.0	946.0	1 812.9	58.0	167.6	119.2	286.2	13.6	67.2
April	873.3	937.7	1 816.6	58.1	161.1	123.7	284.0	13.6	67.1
May	866.2	955.5	1 820.8	58.3	155.5	121.3	281.1	13.4	67.2
June	877.3	948.6	1 826.9	58.5	158.2	123.0	279.5	13.3	67.5
July	876.1	960.9	1 830.9	58.6	167.7	123.9	294.5	13.8	68.1
August	871.3	962.8	1 835.5	58.7	164.3	123.4	289.1	13.6	67.8
September	861.8	970.3	1 833.5	58.5	159.5	108.4	270.2	12.9	67.0
October	868.2	977.7	1 848.5	59.0	146.8	116.4	257.8	12.2	67.4
MALES									
October 2012	576.6	360.7	937.3	59.6	93.1	41.7	134.8	12.6	68.2
October 2013	529.4	390.7	920.2	58.1	96.3	44.7	141.0	13.3	67.0
2014									
October	525.5	383.9	909.5	57.0	97.9	63.4	161.4	15.1	67.2
November	529.5	397.3	926.7	58.1	107.7	57.4	165.1	15.1	68.5
December	540.1	391.3	931.4	58.4	92.3	55.7	148.0	13.7	67.7
2015									
January	516.1	401.4	917.6	57.5	103.9	63.0	166.9	15.4	68.0
February	523.0	403.4	926.4	58.0	101.8	58.8	160.6	14.8	68.1
March	526.3	407.2	933.5	58.4	102.3	58.5	160.7	14.7	68.4
April	519.4	403.2	922.6	57.7	96.8	64.7	161.5	14.9	67.8
May	518.7	412.4	931.2	58.3	95.9	62.5	158.4	14.5	68.2
June	520.0	406.8	926.8	58.0	92.0	62.3	154.3	14.3	67.7
July	521.5	412.0	933.5	58.4	100.9	57.2	158.1	14.5	68.3
August	521.1	413.5	934.6	58.4	99.1	61.0	160.1	14.6	68.4
September	527.2	408.2	935.4	58.4	96.7	56.6	153.3	14.1	67.9
October	528.0	414.1	942.1	58.8	92.5	58.4	150.9	13.8	68.2
FEMALES									
October 2012	376.3	507.2	883.5	58.7	57.1	55.2	112.3	11.3	66.1
October 2013	346.1	536.5	882.6	58.3	72.2	52.5	124.6	12.4	66.5
2014									
October	347.1	529.3	876.4	57.6	59.5	72.3	131.8	13.1	66.2
November	338.0	536.5	874.5	57.5	66.7	67.8	134.5	13.3	66.3
December	343.3	543.5	886.8	58.3	62.9	64.5	127.4	12.6	66.7
2015									
January	338.9	531.2	870.1	57.1	68.0	61.1	129.1	12.9	65.6
February	343.3	538.4	881.8	57.8	65.3	62.0	127.3	12.6	66.2
March	342.7	538.8	881.5	57.7	65.3	60.7	126.1	12.5	66.0
April	353.9	534.5	888.4	58.2	64.3	59.0	123.3	12.2	66.3
May	347.5	543.1	890.5	58.4	59.6	58.8	118.4	11.7	66.1
June	357.2	541.8	899.0	59.0	66.2	60.7	126.9	12.4	67.3
July	354.6	548.9	903.5	59.2	66.7	66.8	133.5	12.9	67.9
August	350.2	549.2	899.4	58.9	65.2	62.5	127.6	12.4	67.2
September	334.6	562.1	896.7	58.6	62.8	51.8	114.7	11.3	66.1
October	340.2	563.6	903.8	59.1	54.2	58.0	112.2	11.0	66.5

	EMPLOYED				UNEMPLOYED				LABOUR FORCE		Not in the labour force (NILF)	Civ. pop. aged 15-24
	Full-time	Part-time	Total	Emp. to pop. ratio	Looked for full-time	Looked for part-time only	Total	Unemp. rate	Total	Part. rate		
	'000	'000	'000	%	'000	'000	'000	%	'000	%	'000	'000
ATTENDING FULL-TIME EDUCATION												
Persons												
October 2012	50.3	614.2	664.5	41.8	19.6	78.7	98.2	12.9	762.7	48.0	826.4	1 589.1
October 2013	52.2	652.1	704.3	42.2	26.4	81.8	108.2	13.3	812.5	48.7	855.4	1 667.9
October 2014	50.2	619.7	669.9	40.2	26.3	118.0	144.3	17.7	814.1	48.8	853.0	1 667.1
October 2015	41.5	658.7	700.2	42.0	27.7	90.6	118.3	14.5	818.5	49.1	850.0	1 668.4
Males												
October 2012	27.5	264.4	291.8	37.9	11.2	33.5	44.7	13.3	336.6	43.7	432.8	769.4
October 2013	27.7	276.0	303.6	37.0	16.5	36.9	53.4	15.0	357.1	43.5	464.5	821.6
October 2014	21.8	258.2	280.1	34.8	13.6	55.9	69.5	19.9	349.5	43.5	454.5	804.0
October 2015	23.6	278.1	301.8	36.6	14.9	47.9	62.8	17.2	364.5	44.3	459.2	823.7
Females												
October 2012	22.9	349.8	372.7	45.5	8.4	45.1	53.5	12.5	426.1	52.0	393.6	819.7
October 2013	24.5	376.2	400.7	47.3	9.9	44.8	54.8	12.0	455.4	53.8	390.8	846.3
October 2014	28.3	361.5	389.8	45.2	12.7	62.1	74.8	16.1	464.6	53.8	398.6	863.1
October 2015	17.9	380.6	398.4	47.2	12.8	42.7	55.5	12.2	454.0	53.7	390.8	844.7
NOT ATTENDING FULL-TIME EDUCATION												
Persons												
October 2012	879.4	268.8	1 148.2	77.2	120.2	15.5	135.7	10.6	1 283.9	86.3	204.3	1 488.2
October 2013	802.3	286.8	1 089.1	76.1	129.7	13.4	143.0	11.6	1 232.2	86.1	198.7	1 430.9
October 2014	801.8	302.3	1 104.1	76.2	119.3	14.7	134.0	10.8	1 238.2	85.4	211.4	1 449.5
October 2015	806.4	326.8	1 133.2	77.5	107.7	23.0	130.7	10.3	1 263.9	86.4	198.8	1 462.7
Males												
October 2012	534.5	105.7	640.2	79.8	75.8	6.4	82.1	11.4	722.4	90.0	80.2	802.5
October 2013	489.2	122.2	611.4	80.2	73.2	5.7	78.9	11.4	690.3	90.6	71.7	762.0
October 2014	492.0	131.5	623.5	78.9	77.4	4.2	81.7	11.6	705.2	89.2	85.1	790.3
October 2015	493.0	141.3	634.4	81.5	71.1	7.6	78.7	11.0	713.1	91.6	65.4	778.5
Females												
October 2012	344.9	163.0	507.9	74.1	44.4	9.2	53.6	9.5	561.5	81.9	124.1	685.6
October 2013	313.2	164.5	477.7	71.4	56.5	7.6	64.1	11.8	541.8	81.0	127.0	668.9
October 2014	309.9	170.8	480.7	72.9	41.9	10.5	52.3	9.8	533.0	80.8	126.3	659.3
October 2015	313.4	185.5	498.8	72.9	36.7	15.4	52.0	9.4	550.9	80.5	133.4	684.3
TOTAL												
Persons												
October 2012	929.7	882.9	1 812.6	58.9	139.7	94.2	233.9	11.4	2 046.6	66.5	1 030.7	3 077.3
October 2013	854.5	938.9	1 793.4	57.9	156.1	95.1	251.2	12.3	2 044.7	66.0	1 054.1	3 098.8
October 2014	852.0	922.0	1 774.0	56.9	145.6	132.7	278.3	13.6	2 052.3	65.8	1 064.4	3 116.7
October 2015	847.9	985.5	1 833.4	58.6	135.4	113.6	249.0	12.0	2 082.4	66.5	1 048.8	3 131.2
Males												
October 2012	562.0	370.1	932.1	59.3	86.9	39.9	126.8	12.0	1 058.9	67.4	513.0	1 571.9
October 2013	516.8	398.2	915.1	57.8	89.7	42.7	132.3	12.6	1 047.4	66.1	536.2	1 583.6
October 2014	513.8	389.7	903.5	56.7	91.0	60.1	151.1	14.3	1 054.7	66.2	539.6	1 594.3
October 2015	516.7	419.5	936.1	58.4	85.9	55.5	141.5	13.1	1 077.6	67.3	524.6	1 602.2
Females												
October 2012	367.8	512.8	880.6	58.5	52.8	54.3	107.1	10.8	987.7	65.6	517.7	1 505.4
October 2013	337.7	540.7	878.4	58.0	66.4	52.5	118.9	11.9	997.3	65.8	517.9	1 515.2
October 2014	338.2	532.3	870.4	57.2	54.6	72.6	127.2	12.7	997.6	65.5	524.8	1 522.4
October 2015	331.2	566.1	897.3	58.7	49.5	58.1	107.5	10.7	1 004.8	65.7	524.2	1 529.0

	EMPLOYED				UNEMPLOYED				LABOUR FORCE		Not in the labour force (NILF) '000	Civ. pop. aged 15-24 '000
	Full-time	Part-time	Total	Emp. to pop. ratio	Looked for full-time	Looked for part-time only	Total	Unemp. rate	Total	Part. rate		
	'000	'000	'000	%	'000	'000	'000	%	'000	%		
ATTENDING FULL-TIME EDUCATION												
New South Wales	14.1	201.2	215.3	39.6	12.8	26.5	39.3	15.4	254.6	46.8	289.6	544.2
Victoria	7.7	184.7	192.4	41.6	5.3	28.0	33.3	14.7	225.6	48.8	236.7	462.4
Queensland	8.9	126.8	135.7	45.0	*2.7	13.8	16.5	10.9	152.2	50.5	149.2	301.4
South Australia	*2.6	48.1	50.7	41.6	3.1	10.1	13.2	20.7	63.9	52.5	57.9	121.8
Western Australia	5.9	69.6	75.6	46.4	*2.7	7.7	10.4	12.1	86.0	52.8	76.7	162.7
Tasmania	*0.5	14.3	14.8	45.8	*0.6	1.6	2.2	12.9	17.0	52.6	15.3	32.3
Northern Territory	0.7	3.4	4.1	36.9	*—	0.5	0.5	11.3	4.7	41.7	6.5	11.2
Australian Capital Territory	*1.1	10.6	11.7	35.9	*0.5	2.4	2.9	19.7	14.5	44.7	18.0	32.5
Australia	41.5	658.7	700.2	42.0	27.7	90.6	118.3	14.5	818.5	49.1	850.0	1 668.4
NOT ATTENDING FULL-TIME EDUCATION												
New South Wales	264.8	87.1	352.0	79.0	30.1	*7.5	37.6	9.6	389.6	87.4	56.2	445.7
Victoria	175.2	77.8	253.0	78.1	21.9	4.1	26.0	9.3	279.0	86.1	44.9	323.9
Queensland	187.3	78.3	265.6	77.1	26.9	5.7	32.6	10.9	298.2	86.6	46.1	344.3
South Australia	44.0	29.4	73.4	76.5	8.3	*1.6	10.0	12.0	83.4	86.8	12.6	96.0
Western Australia	95.1	39.6	134.7	75.7	14.3	*2.9	17.2	11.4	151.9	85.4	26.1	178.0
Tasmania	17.1	6.9	24.0	73.3	4.0	*0.6	4.6	16.0	28.6	87.3	4.2	32.7
Northern Territory	12.5	3.2	15.8	71.9	0.8	0.4	1.3	7.4	17.0	77.6	4.9	21.9
Australian Capital Territory	10.3	4.5	14.8	73.5	*1.3	*0.2	*1.5	*9.3	16.3	81.1	3.8	20.1
Australia	806.4	326.8	1 133.2	77.5	107.7	23.0	130.7	10.3	1 263.9	86.4	198.8	1 462.7
TOTAL												
New South Wales	279.0	288.3	567.3	57.3	42.8	34.0	76.9	11.9	644.1	65.1	345.7	989.9
Victoria	182.9	262.4	445.4	56.6	27.2	32.0	59.2	11.7	504.6	64.2	281.6	786.2
Queensland	196.1	205.2	401.3	62.1	29.6	19.6	49.2	10.9	450.4	69.8	195.3	645.8
South Australia	46.6	77.5	124.1	57.0	11.5	11.7	23.2	15.7	147.3	67.6	70.5	217.8
Western Australia	101.0	109.2	210.2	61.7	17.0	10.6	27.7	11.6	237.9	69.8	102.8	340.7
Tasmania	17.6	21.2	38.8	59.6	4.6	2.1	6.8	14.8	45.6	70.0	19.5	65.1
Northern Territory	13.2	6.6	19.9	60.1	0.8	0.9	1.8	8.2	21.7	65.4	11.4	33.1
Australian Capital Territory	11.4	15.1	26.5	50.3	1.9	2.5	4.4	14.2	30.9	58.6	21.8	52.7
Australia	847.9	985.5	1 833.4	58.6	135.4	113.6	249.0	12.0	2 082.4	66.5	1 048.8	3 131.2

* estimate is subject to sampling variability too high for most practical purposes

— nil or rounded to zero (including null cells)

LABOUR FORCE STATUS IN OCTOBER 2015

<i>Labour force status in September 2015</i>	<i>Employed full-time</i>	<i>Employed part-time</i>	<i>Employed total</i>	<i>Unemployed</i>	<i>Labour force</i>	<i>Not in the labour force (NILF)</i>	<i>Total</i>
	'000	'000	'000	'000	'000	'000	'000
PERSONS							
Matched sample							
Employed full-time	6 073.5	321.3	6 394.7	34.1	6 428.8	78.4	6 507.2
Employed part-time	319.8	2 454.6	2 774.4	38.8	2 813.2	143.1	2 956.3
Employed total	6 393.3	2 775.9	9 169.1	72.9	9 242.1	221.5	9 463.6
Unemployed	55.9	66.9	122.8	356.0	478.9	121.5	600.3
Labour force	6 449.2	2 842.8	9 292.0	429.0	9 720.9	342.9	10 063.9
Not in the labour force (NILF)	69.5	150.7	220.2	136.0	356.2	4 814.7	5 170.9
Total	6 518.7	2 993.5	9 512.2	565.0	10 077.1	5 157.7	15 234.8
Unmatched sample							
Unmatched in common sample	613.7	260.3	873.9	70.2	944.2	868.0	1 812.2
Incoming rotation group	1 014.5	460.9	1 475.4	80.2	1 555.6	756.2	2 311.9
Total	1 628.2	721.1	2 349.4	150.4	2 499.8	1 624.3	4 124.1
Civilian population aged 15 years and over	8 146.9	3 714.6	11 861.5	715.4	12 576.9	6 782.0	19 358.9
MALES							
Matched sample							
Employed full-time	3 972.3	128.4	4 100.7	25.8	4 126.4	37.7	4 164.1
Employed part-time	138.6	685.2	823.8	19.8	843.6	52.2	895.8
Employed total	4 110.9	813.5	4 924.5	45.6	4 970.1	89.8	5 059.9
Unemployed	39.3	34.7	74.0	204.8	278.8	57.5	336.3
Labour force	4 150.2	848.2	4 998.4	250.4	5 248.9	147.3	5 396.2
Not in the labour force (NILF)	41.0	57.8	98.8	53.9	152.7	1 938.2	2 090.9
Total	4 191.2	906.0	5 097.2	304.4	5 401.6	2 085.5	7 487.1
Unmatched sample							
Unmatched in common sample	386.0	93.8	479.8	41.5	521.3	389.6	910.8
Incoming rotation group	663.0	136.9	799.9	44.9	844.9	297.1	1 142.0
Total	1 048.9	230.7	1 279.7	86.5	1 366.1	686.7	2 052.8
Civilian population aged 15 years and over	5 240.2	1 136.8	6 376.9	390.8	6 767.7	2 772.2	9 539.9
FEMALES							
Matched sample							
Employed full-time	2 101.1	192.9	2 294.0	8.4	2 302.4	40.7	2 343.1
Employed part-time	181.2	1 769.4	1 950.7	19.0	1 969.6	90.9	2 060.6
Employed total	2 282.3	1 962.3	4 244.7	27.3	4 272.0	131.7	4 403.7
Unemployed	16.6	32.2	48.8	151.2	200.1	63.9	264.0
Labour force	2 298.9	1 994.6	4 293.5	178.6	4 472.1	195.6	4 667.7
Not in the labour force (NILF)	28.5	92.9	121.4	82.0	203.4	2 876.6	3 080.0
Total	2 327.5	2 087.4	4 414.9	260.6	4 675.5	3 072.2	7 747.7
Unmatched sample							
Unmatched in common sample	227.7	166.5	394.2	28.7	422.9	478.5	901.4
Incoming rotation group	351.6	323.9	675.5	35.3	710.8	459.1	1 169.9
Total	579.3	490.4	1 069.7	64.0	1 133.7	937.6	2 071.2
Civilian population aged 15 years and over	2 906.7	2 577.9	5 484.6	324.6	5 809.2	4 009.8	9 819.0

	EMPLOYED TOTAL		EMPLOYED FULL-TIME		EMPLOYED PART-TIME	
	<i>Trend</i>	<i>Seasonally adjusted</i>	<i>Trend</i>	<i>Seasonally adjusted</i>	<i>Trend</i>	<i>Seasonally adjusted</i>
	millions	millions	millions	millions	millions	millions
PERSONS						
October 2012	1 581.0	1 580.4	1 346.0	1 346.1	235.0	234.3
October 2013	1 589.7	1 588.3	1 343.3	1 338.3	246.4	250.0
2014						
October	1 599.7	1 599.0	1 346.1	1 345.6	253.7	253.5
November	1 601.4	1 600.4	1 346.4	1 345.6	255.0	254.8
December	1 605.4	1 589.9	1 349.3	1 336.4	256.1	253.5
2015						
January	1 610.8	1 625.2	1 353.8	1 364.4	257.0	260.8
February	1 616.2	1 617.5	1 358.4	1 360.0	257.8	257.6
March	1 620.6	1 621.9	1 362.0	1 363.9	258.6	258.0
April	1 623.0	1 621.5	1 363.7	1 363.5	259.4	258.0
May	1 624.5	1 624.2	1 364.4	1 363.5	260.2	260.7
June	1 626.5	1 629.2	1 365.4	1 368.0	261.1	261.1
July	1 630.5	1 627.3	1 368.2	1 363.9	262.3	263.3
August	1 635.7	1 628.0	1 372.4	1 366.1	263.3	261.9
September	1 641.4	1 641.4	1 377.1	1 376.7	264.3	264.6
October	1 647.1	1 660.4	1 382.0	1 394.6	265.1	265.8
MALES						
October 2012	970.9	973.9	902.8	905.5	68.1	68.4
October 2013	970.1	968.3	896.0	893.5	74.1	74.8
2014						
October	976.0	975.2	900.0	898.7	76.0	76.5
November	977.0	978.4	900.7	902.7	76.3	75.7
December	979.0	972.2	902.6	896.9	76.5	75.3
2015						
January	981.5	986.8	904.9	908.4	76.6	78.5
February	983.8	984.0	907.0	907.4	76.8	76.6
March	985.4	988.0	908.2	911.5	77.2	76.5
April	986.0	984.6	908.5	907.5	77.5	77.1
May	986.3	985.4	908.3	907.2	77.9	78.2
June	987.0	989.2	908.7	910.4	78.3	78.8
July	988.9	986.5	910.1	907.4	78.7	79.1
August	991.6	986.5	912.5	908.3	79.0	78.2
September	994.6	995.4	915.4	915.5	79.3	79.9
October	997.9	1 005.4	918.5	926.3	79.4	79.1
FEMALES						
October 2012	610.1	606.5	443.2	440.6	166.9	165.9
October 2013	619.6	620.0	447.2	444.8	172.3	175.2
2014						
October	623.7	623.8	446.0	446.8	177.7	177.0
November	624.4	622.0	445.7	442.9	178.7	179.1
December	626.4	617.7	446.7	439.5	179.7	178.2
2015						
January	629.3	638.4	448.9	456.1	180.4	182.3
February	632.4	633.5	451.5	452.6	181.0	180.9
March	635.2	633.9	453.8	452.4	181.4	181.5
April	637.0	636.9	455.2	456.0	181.8	180.9
May	638.2	638.8	456.0	456.2	182.2	182.5
June	639.5	639.9	456.7	457.6	182.8	182.3
July	641.6	640.7	458.1	456.5	183.5	184.3
August	644.2	641.4	459.9	457.7	184.3	183.7
September	646.8	645.9	461.8	461.2	185.0	184.7
October	649.2	655.0	463.5	468.3	185.7	186.7

MONTHLY HOURS WORKED IN ALL JOBS

	New South Wales	Victoria	Queensland	South Australia	Western Australia	Tasmania	Northern Territory	Australian Capital Territory	Australia
	millions	millions	millions	millions	millions	millions	millions	millions	millions
TREND									
October 2012	494.5	385.6	323.5	108.7	189.9	30.5	19.5	28.7	1 581.0
October 2013	495.6	390.6	330.7	107.5	188.3	29.7	19.8	27.4	1 589.7
2014									
October	501.0	390.9	325.9	110.0	192.9	31.5	19.6	28.0	1 599.7
November	501.1	392.4	326.4	109.5	192.9	31.6	19.7	27.9	1 601.4
December	501.4	394.7	327.7	109.3	192.9	31.6	19.8	27.9	1 605.4
2015									
January	502.0	397.1	329.8	109.3	193.0	31.6	20.0	28.0	1 610.8
February	503.0	399.2	331.8	109.2	193.2	31.5	20.2	28.1	1 616.2
March	504.8	400.6	332.9	109.0	193.3	31.4	20.4	28.2	1 620.6
April	507.4	401.3	332.6	108.5	193.2	31.3	20.5	28.2	1 623.0
May	510.7	401.3	331.7	107.9	192.9	31.3	20.5	28.2	1 624.5
June	514.1	401.2	331.4	107.4	192.5	31.4	20.4	28.1	1 626.5
July	517.3	401.4	332.4	107.1	192.2	31.6	20.4	28.1	1 630.5
August	520.1	401.9	334.3	107.1	192.1	31.7	20.4	28.2	1 635.7
September	522.2	402.5	336.7	107.2	192.2	31.9	20.3	28.3	1 641.4
October	523.7	403.3	339.4	107.5	192.4	32.1	20.3	28.4	1 647.1

SEASONALLY ADJUSTED

October 2012	494.5	385.9	324.2	109.5	187.3	31.0	np	np	1 580.4
October 2013	495.5	393.0	329.4	106.6	187.7	29.7	np	np	1 588.3
2014									
October	502.4	387.9	326.6	110.6	192.4	31.6	np	np	1 599.0
November	503.1	393.8	320.4	110.3	193.6	31.6	np	np	1 600.4
December	495.5	391.8	324.6	106.8	192.5	31.3	np	np	1 589.9
2015									
January	506.9	399.0	337.0	109.1	193.4	31.6	np	np	1 625.2
February	502.9	399.2	333.7	109.2	192.6	31.8	np	np	1 617.5
March	503.3	403.1	331.1	111.3	192.4	31.6	np	np	1 621.9
April	506.4	402.2	329.7	108.8	194.3	31.3	np	np	1 621.5
May	508.6	398.5	336.6	107.6	193.4	30.8	np	np	1 624.2
June	515.3	401.7	334.1	105.2	192.9	31.4	np	np	1 629.2
July	520.9	401.9	324.2	107.7	192.0	31.7	np	np	1 627.3
August	519.2	400.5	332.0	106.8	190.3	31.6	np	np	1 628.0
September	522.1	402.2	336.9	108.0	191.1	32.5	np	np	1 641.4
October	522.8	405.4	347.6	107.9	195.3	31.8	np	np	1 660.4

np not available for publication but included in totals where applicable, unless otherwise indicated

	UNDEREMPLOYED TOTAL			UNDEREMPLOYMENT RATE			UNDERUTILISATION RATE		
	<i>Trend</i>	<i>Seasonally adjusted</i>	<i>Original</i>	<i>Trend</i>	<i>Seasonally adjusted</i>	<i>Original</i>	<i>Trend</i>	<i>Seasonally adjusted</i>	<i>Original</i>
	'000	'000	'000	%	%	%	%	%	%
PERSONS									
August 2011	838.9	825.9	790.5	7.1	7.0	6.7	12.3	12.4	11.8
August 2012	866.3	852.9	819.7	7.2	7.1	6.9	12.5	12.4	11.9
August 2013	931.9	949.9	917.3	7.7	7.8	7.6	13.5	13.7	13.3
2014									
February	946.4	950.3	927.7	7.8	7.8	7.5	13.7	13.7	14.3
May	971.0	957.7	937.6	7.9	7.8	7.6	13.9	13.8	13.5
August	1 010.4	1 014.4	1 041.5	8.2	8.3	8.5	14.4	14.4	14.4
November	1 040.3	1 052.5	1 077.6	8.4	8.5	8.8	14.7	14.9	14.6
2015									
February	1 052.7	1 051.5	1 042.8	8.5	8.5	8.3	14.6	14.6	15.0
May	1 056.3	1 047.2	1 022.7	8.5	8.4	8.2	14.5	14.4	14.0
August	1 059.6	1 068.0	1 021.8	8.5	8.5	8.2	14.4	14.4	14.3
MALES									
August 2011	342.7	332.0	322.9	5.3	5.2	5.1	10.4	10.5	10.1
August 2012	347.5	340.2	332.0	5.4	5.2	5.2	10.6	10.5	10.2
August 2013	385.2	390.3	383.3	5.9	5.9	5.9	11.7	11.9	11.6
2014									
February	389.6	392.6	382.7	5.9	6.0	5.7	11.8	11.8	12.2
May	404.5	396.2	386.9	6.1	6.0	5.8	12.0	11.8	11.5
August	425.8	429.8	440.4	6.4	6.5	6.6	12.5	12.5	12.6
November	439.0	444.8	449.1	6.6	6.7	6.7	12.8	13.0	12.7
2015									
February	441.0	442.6	438.3	6.6	6.6	6.5	12.7	12.7	13.0
May	438.8	429.6	416.7	6.5	6.4	6.2	12.5	12.4	12.0
August	438.6	445.3	416.9	6.5	6.6	6.2	12.3	12.4	12.4
FEMALES									
August 2011	496.1	494.0	467.6	9.2	9.1	8.7	14.6	14.6	13.9
August 2012	518.8	512.7	487.7	9.4	9.4	9.0	14.8	14.5	13.9
August 2013	546.7	559.6	533.9	9.8	10.0	9.7	15.6	16.0	15.2
2014									
February	556.8	557.7	545.1	9.9	9.9	9.7	15.9	15.9	16.9
May	566.5	561.5	550.7	10.1	10.0	9.7	16.2	16.1	15.8
August	584.6	584.6	601.1	10.4	10.4	10.6	16.6	16.5	16.5
November	601.2	607.7	628.5	10.6	10.8	11.2	16.9	17.1	16.9
2015									
February	611.7	609.0	604.5	10.8	10.7	10.5	16.9	16.9	17.3
May	617.5	617.6	606.1	10.8	10.8	10.5	16.8	16.7	16.4
August	621.1	622.6	604.9	10.8	10.8	10.5	16.7	16.8	16.5

	UNDEREMPLOYED TOTAL			UNDEREMPLOYMENT RATE			UNDERUTILISATION RATE		
	Trend	Seasonally Adjusted	Original	Trend	Seasonally Adjusted	Original	Trend	Seasonally Adjusted	Original
	'000	'000	'000	%	%	%	%	%	%
PERSONS									
New South Wales	325.3	323.3	320.3	8.3	8.2	8.1	14.1	14.0	14.0
Victoria	271.4	275.1	252.8	8.6	8.7	8.1	14.3	14.5	14.1
Queensland	222.3	223.7	211.3	8.8	8.9	8.5	15.0	15.1	14.8
South Australia	84.0	82.6	83.3	9.6	9.5	9.6	17.3	17.0	17.3
Western Australia	109.5	110.5	109.7	7.6	7.6	7.6	12.7	12.7	13.5
Tasmania	28.1	27.7	23.8	10.9	10.8	9.3	18.1	17.9	15.6
Northern Territory	5.4	np	6.1	3.9	np	4.3	8.2	np	9.3
Australian Capital Territory	13.8	np	14.5	6.2	np	6.6	10.5	np	11.9
<i>Australia</i>	<i>1 059.6</i>	<i>1 068.0</i>	<i>1 021.8</i>	<i>8.5</i>	<i>8.5</i>	<i>8.2</i>	<i>14.4</i>	<i>14.4</i>	<i>14.3</i>
MALES									
New South Wales	134.4	134.3	135.9	6.3	6.3	6.4	11.8	11.8	12.0
Victoria	113.4	117.9	100.7	6.7	6.9	6.0	11.9	12.2	11.6
Queensland	94.1	94.6	83.6	7.0	7.1	6.3	13.8	13.8	13.4
South Australia	35.4	34.7	33.4	7.6	7.5	7.2	15.1	14.7	16.1
Western Australia	42.0	42.1	44.7	5.2	5.2	5.6	11.0	10.9	12.1
Tasmania	10.9	11.0	8.8	7.9	8.0	6.4	15.7	15.7	12.7
Northern Territory	2.3	np	3.1	3.0	np	4.0	7.9	np	9.6
Australian Capital Territory	7.6	np	6.6	6.6	np	6.0	10.4	np	11.0
<i>Australia</i>	<i>438.6</i>	<i>445.3</i>	<i>416.9</i>	<i>6.5</i>	<i>6.6</i>	<i>6.2</i>	<i>12.3</i>	<i>12.4</i>	<i>12.4</i>
FEMALES									
New South Wales	190.9	189.1	184.4	10.6	10.5	10.1	16.8	16.7	16.3
Victoria	157.9	157.1	152.1	10.8	10.8	10.6	17.1	17.1	17.1
Queensland	128.1	129.1	127.7	10.9	10.9	11.0	16.5	16.7	16.4
South Australia	48.6	47.9	49.9	11.9	11.8	12.3	19.9	19.6	18.6
Western Australia	67.5	68.4	65.0	10.5	10.6	10.3	14.8	15.0	15.4
Tasmania	17.3	16.8	15.0	14.5	14.0	12.6	20.8	20.4	18.9
Northern Territory	3.1	np	3.0	5.0	np	4.7	8.5	np	9.0
Australian Capital Territory	6.2	np	7.9	5.8	np	7.3	10.5	np	12.8
<i>Australia</i>	<i>621.1</i>	<i>622.6</i>	<i>604.9</i>	<i>10.8</i>	<i>10.8</i>	<i>10.5</i>	<i>16.7</i>	<i>16.8</i>	<i>16.5</i>

np not available for publication but included in totals where applicable, unless otherwise indicated

WHAT IF...? REVISIONS TO TREND ESTIMATES

EFFECT OF NEW SEASONALLY ADJUSTED ESTIMATES ON TREND ESTIMATES

TREND REVISIONS

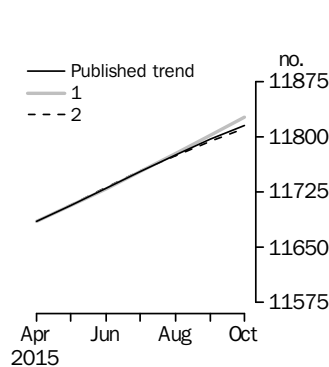
Each time new seasonally adjusted estimates become available, trend estimates are revised. This revision is a combined result of the concurrent seasonal adjustment process and the application of surrogates of the Henderson average to the seasonally adjusted series (see paragraphs 28 to 37 of the Explanatory Notes).

The examples in the tables below show two illustrative scenarios and the consequent revisions to previous trend estimates of employment and the unemployment rate. The revisions in the scenarios are due to the use of surrogates of the Henderson average, as the impact of revision of seasonally adjusted estimates can not be estimated in advance.

- (1) The November seasonally adjusted estimate is *higher* than the October estimate by:
 - 0.23% for employment
 - 2.20% for the unemployment rate
- (2) The November seasonally adjusted estimate is *lower* than the October estimate by:
 - 0.23% for employment
 - 2.20% for the unemployment rate

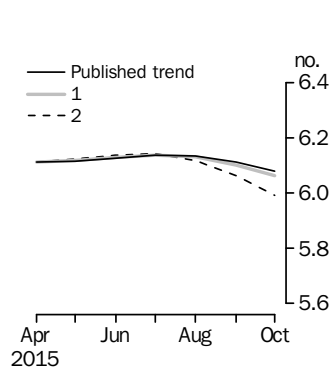
The percentage changes of 0.23% and 2.20% represent the average absolute monthly percentage changes in employment and the unemployment rate respectively. Estimates in the graphs have been calculated using unrounded estimates, and may be different from, but more accurate than, rounded estimates depicted in the corresponding table.

EMPLOYMENT



	Trend as published	WHAT IF NEXT MONTH'S SEASONALLY ADJUSTED ESTIMATE IS:	
		(1) 11 865.5 i.e. rises by 0.23%	(2) 11 811.0 i.e. falls by 0.23%
2015			
July	11 753.0	11 752.4	11 753.4
August	11 775.6	11 777.2	11 774.8
September	11 796.6	11 802.4	11 794.3
October	11 815.4	11 826.4	11 811.2

UNEMPLOYMENT RATE



	Trend as published	WHAT IF NEXT MONTH'S SEASONALLY ADJUSTED ESTIMATE IS:	
		(1) 6.0 i.e. rises by 2.20%	(2) 5.8 i.e. falls by 2.20%
2015			
July	6.1	6.1	6.1
August	6.1	6.1	6.1
September	6.1	6.1	6.1
October	6.1	6.1	6.0

EXPLANATORY NOTES

INTRODUCTION

1 This publication contains estimates of the civilian labour force derived from the Labour Force Survey component of the Monthly Population Survey. The full time series for estimates from this publication are also available electronically. More detailed estimates are released one week after this publication in various electronic formats – see *Labour Force, Australia, Detailed – Electronic Delivery* (cat. no. 6291.0.55.001) and *Labour Force, Australia, Detailed, Quarterly* (cat. no. 6291.0.55.003).

CONCEPTS, SOURCES AND METHODS

2 The conceptual framework used in Australia's Labour Force Survey aligns closely with the standards and guidelines set out in Resolutions of International Conferences of Labour Statisticians. Descriptions of the underlying concepts and structure of Australia's labour force statistics, and the sources and methods used in compiling the estimates, are presented in *Labour Statistics: Concepts, Sources and Methods* (cat. no. 6102.0.55.001) which is available on the ABS website <<http://www.abs.gov.au>>.

LABOUR FORCE SURVEY

3 The Labour Force Survey is based on a multi-stage area sample of private dwellings (currently approximately 26,000 houses, flats, etc.) and a list sample of non-private dwellings (hotels, motels, etc.), and covers approximately 0.32% of the civilian population of Australia aged 15 years and over.

4 Information is obtained from the occupants of selected dwellings by specially trained interviewers using computer-assisted interviewing, or self-completion online.

5 Households selected for the Labour Force Survey are interviewed each month for eight months, with one-eighth of the sample being replaced each month. The first interview is generally conducted face-to-face. Subsequent interviews are conducted by telephone (if acceptable to the respondent).

6 From December 2012 to April 2013, the ABS conducted a trial of online electronic data collection. Respondents in one rotation group (i.e. one-eighth of the survey sample) were offered the option of self completing their labour force survey questionnaire online instead of via a face-to-face or telephone interview. From May 2013, the ABS expanded the offer of online electronic collection to 50% of each new incoming rotation group. For more information see the article in the April 2013 issue of this publication. From September 2013, online electronic collection has been offered to 100% of private dwellings in each incoming rotation group. From April 2014, 100% of private dwellings are being offered online electronic collection.

7 The interviews are generally conducted during the two weeks beginning on the Sunday between the 5th and 11th of each month. The information obtained relates to the week before the interview (i.e. the reference week). Each year, to deal with operational difficulties involved with collecting and processing the Labour Force Survey around the Christmas and New Year holiday period, interviews for December start four weeks after November interviews start (i.e. between the 3rd and 9th December), and January interviews start five weeks after December interviews start. As a result, January interviewing may commence as early as the 7th or as late as the 13th, depending on the year. Occasionally, circumstances that present significant operational difficulties for survey collection can result in a change to the normal pattern for the start of interviewing.

8 Estimates from the Labour Force Survey are usually published first in this publication 32 days after the commencement of interviews for that month, with the exception of estimates for each December which are usually published 39 days after the commencement of interviews.

EXPLANATORY NOTES *continued*

SCOPE OF SURVEY

9 The Labour Force Survey includes all persons aged 15 years and over except members of the permanent defence forces, certain diplomatic personnel of overseas governments customarily excluded from census and estimated population counts, overseas residents in Australia, and members of non-Australian defence forces (and their dependants) stationed in Australia.

COVERAGE

10 In the Labour Force Survey, coverage rules are applied which aim to ensure that each person is associated with only one dwelling, and hence has only one chance of selection. The coverage rules are necessarily a balance between theoretical and operational considerations. Nevertheless, the chance of a person being enumerated at two separate dwellings in the survey is considered to be negligible.

POPULATION BENCHMARKS

11 The Labour Force Survey estimates are calculated in such a way as to add to independent estimates of the civilian population aged 15 years and over (population benchmarks). These population benchmarks are based on the most recently released estimates of Final, Revised and Preliminary quarterly Estimated Resident Population (ERP). For information on the methodology used to produce the ERP see *Australian Demographic Statistics* (cat. no. 3101.0). Since the most recently released ERP estimates lag the current time period for Labour Force estimates by nine months, the Labour Force population benchmarks are created by projecting forward three quarters past the most recently released quarterly ERP estimates. The projection is based on the historical pattern of each population component – births, deaths, interstate migration and net overseas migration (NOM). Projected estimates of NOM are supplemented with other data sources to better forecast population changes in the short-term. The main data source is the forecasts published by the Department of Immigration & Border Protection in the publication *The Outlook for Net Overseas Migration*.

12 Commencing in March 2010, the ERP series has been revised twice-yearly, in the March and September quarter issues of *Australian Demographic Statistics* (cat. no. 3101.0). This biannual revision cycle incorporates more up to date information available for NOM. This updated information is included in the population benchmarks used in creating the Labour Force estimates when they are rebenchmarked.

13 Every five years, the ERP series are revised to incorporate additional information available from the latest Census of Population and Housing (Census). Labour Force Survey population benchmarks, and the estimates, are revised following this five-yearly revision in the ERP. The process of incorporating the revised population benchmarks is referred to as 'rebasings'. From the January 2014 issue of this publication, labour force estimates have been compiled using population benchmarks based on the results of the 2011 Census. Revisions were made to historical Labour Force estimates from June 2006 to December 2013. In addition, estimates from July 1991 to May 2006 were revised to reflect population benchmarks based on ERP revised following the 2011 Census. The next rebasing based on the Census will be following the release of the 2016 Census-based ERP estimates, which will incorporate revisions back five years. For more information on revised ERP estimates, refer to the June 2012 issue of *Australian Demographic Statistics* (cat. no. 3101.0) released in December 2012.

14 In between Censuses, the ABS revises the Labour Force population benchmarks using the latest ERP according to the paragraphs above. These were introduced in the July 2010, November 2012 and April 2013 issues. The revisions planned for the October 2013, April 2014 and November 2014 issues were not implemented (see *What's New in the Labour Force* in the September 2013 issue and *Changes in this Issue* in the October 2014 issue of this publication). From the February 2015 issue, rebenchmarking will be undertaken quarterly in the February, May, August and November issues apart from May 2015. For more information, refer to the article *Rebenchmarking of Labour Force Series* in the February 2015 issue of this publication.

EXPLANATORY NOTES *continued*

ESTIMATION METHOD

15 The estimation method used in the Labour Force Survey is Composite Estimation, which was introduced in May 2007. In January 2014 composite estimation was applied to all estimates from July 1991 as part of the 2011 Census rebenchmarking. Composite Estimation combines data collected in the previous six months with current month's data to produce the current month's estimates, thereby exploiting the high correlation between overlapping samples across months in the Labour Force Survey. The Composite Estimator combines the previous and current months' data by applying different factors according to length of time in the survey. After these factors are applied, the seven months of data are weighted to align with current month population benchmarks. For details see *Information Paper: Forthcoming Changes to Labour Force Statistics, 2007* (cat. no. 6292.0).

COMPARABILITY OF SERIES

16 From April 1986, the definition of employed persons was changed to include persons who worked without pay between 1 and 14 hours per week in a family business or on a farm (i.e. contributing family workers). For further information, see paragraphs 22 and 23 of the Explanatory Notes in the February 2003 issue of *Labour Force, Australia* (cat. no. 6203.0).

17 The ABS introduced telephone interviewing into the Labour Force Survey in August 1996. Implementation was phased in for each new sample group from August 1996 to February 1997. During the period of implementation, the new method produced different estimates than would have been obtained under the old methodology. The effect dissipated over the final months of implementation and was no longer discernible from February 1997. The estimates for February 1997 and onwards are directly comparable to estimates for periods prior to August 1996. For further details, see the feature article in the June 1997 issue of *Labour Force, Australia* (cat. no. 6203.0).

18 From April 2001 the Labour Force Survey was conducted using a redesigned questionnaire containing additional data items and some minor definitional changes. The definition of unemployed persons was changed to include all persons who were waiting to start work and were available to start in the reference week. This change was introduced in February 2004, when historical unit record data were revised from April 2001 to January 2004. This revision created a small trend break at April 2001 in unemployed persons and unemployment rate series. For further details, see *Information Paper: Forthcoming Changes to Labour Force Statistics, 2003* (cat. no. 6292.0), released in December 2003. From July 2014 the Labour Force Survey questionnaire was further redesigned and definitional changes made to active job search steps and duration of job search. For further details, see the Glossary and *Information Paper: Forthcoming Changes to Labour Force Statistics, June 2014* (cat. no. 6292.0), released in October 2014.

19 Core labour force series were revised in April 2001 for the period April 1986 to March 2001 for the remaining definitional changes introduced with the redesigned questionnaire, to reduce the impact of the changes on labour force series. For further details, see *Information Paper: Implementing the Redesigned Labour Force Survey Questionnaire* (cat. no. 6295.0) and the 2004 issue of *Information Paper: Questionnaires Used in the Labour Force Survey* (cat. no. 6232.0).

20 In May 2007, an improved method of estimation, known as composite estimation, was introduced into the Labour Force Survey. In introducing this change, the ABS revised unit record data from April 2001 to April 2007 based on the new estimation method. No change was identified in the trend breaks in the unemployed persons and unemployment rate series which arose with the introduction of a redesigned survey form in April 2001 (as noted above in paragraph 18). In January 2014 composite estimation was applied to all estimates from July 1991 as part of the 2011 Census rebenchmarking.

EXPLANATORY NOTES *continued*

COMPARABILITY OF SERIES *continued*

For further details, see *Information Paper: Forthcoming Changes to Labour Force Statistics, 2007* (cat. no. 6292.0).

21 As one of a range of ABS savings initiatives for the 2008–09 financial year, there was a 24% reduction in the LFS sample size for the period July 2008 to August 2009, relative to the June 2008 sample size. The sample reduction was reversed from September 2009 to December 2009, with December 2009 estimates being the first produced under the fully reinstated sample.

LABOUR FORCE SURVEY SAMPLE

22 The current Labour Force Survey sample has been selected using information collected in the 2011 Census of Population and Housing.

23 The sample was introduced over four months – May 2013 to August 2013. Two rotation groups (i.e. one-quarter of the survey sample) were introduced each month. During the sample phase-in, the increased sample rotation had an impact on the quality of estimates. Movement standard errors increased by approximately 10%, representing, for example, an increase on the standard error on the Australian monthly change in employment for May 2013 from 27,000 to approximately 29,700.

24 Due to the use of composite estimation, there was a marginal impact on the quality of level estimates. Gross Flows analysis were impacted by the sample phase-in with between 60% to 70% of the sample available for matching between the current and previous months instead of the usual 80%. After full transition to the new sample, the quality of level and movement estimates is at the level designed for under the 2011 sample design and are of similar quality as the 2006 sample design. For further details, see *Information Paper: Labour Force Survey Sample Design* (cat. no. 6269.0) released on 30 May 2013.

RELIABILITY OF ESTIMATES

25 Two types of error are possible in an estimate based on a sample survey: sampling error and non-sampling error.

26 Sampling error occurs because a sample, rather than the entire population, is surveyed. One measure of the likely difference resulting from not including all dwellings in the survey is given by the standard error. There are about two chances in three that a sample estimate will differ by less than one standard error from the figure that would have been obtained if all dwellings had been included in the survey, and about nineteen chances in twenty that the difference will be less than two standard errors. Standard errors of key estimates for the latest month and of movements since the previous month of these estimates are shown in the standard errors section of this publication. Standard errors for other estimates and other movements may be calculated by using the spreadsheet contained in *Labour Force Survey Standard Errors, Data Cube* (cat. no. 6298.0.55.001) which is available free of charge on the ABS website <<http://www.abs.gov.au>>.

27 Non-sampling error arises from inaccuracies in collecting, recording and processing the data. Every effort is made to minimise reporting error by the careful design of questionnaires, intensive training and supervision of interviewers, and efficient data processing procedures. Non-sampling error also arises because information cannot be obtained from all persons selected in the survey. The Labour Force Survey receives a high level of co-operation from individuals in selected dwellings, with the average response rate over the last year being 94%. See Glossary for definition of response rate.

SEASONAL ADJUSTMENT AND TREND ESTIMATION

28 Any original time series can be thought of as a combination of three broad and distinctly different types of behaviour, each representing the impact of certain types of real world events on the information being collected: systematic calendar related events, short-term irregular fluctuations and long-term cyclical behaviour. A multiplicative decomposition model is applied in the seasonal adjustment of Labour Force Time Series, where the original time series (O) is considered as the product of the underlying trend

EXPLANATORY NOTES *continued*

SEASONAL ADJUSTMENT AND TREND ESTIMATION *continued*

(T), a systematic calendar related or seasonal component (S) and an irregular component (I). This can be expressed as $O = T*S*I$. The contributions of each of these behaviours varies from series to series, as well as throughout time for a given series, depending on the nature of the interactions of real world events and the data of interest.

29 Seasonal adjustment is a statistical technique that attempts to measure and remove the effects of systematic calendar related patterns including seasonal variation to reveal how a series changes from period to period. Seasonal adjustment does not aim to remove the irregular or non-seasonal influences which may be present in any particular month. This means that month-to-month movements of the seasonally adjusted estimates may not be reliable indicators of trend behaviour.

30 The Labour Force Survey uses the concurrent seasonal adjustment method to derive seasonal factors. Concurrent seasonal adjustment uses data up to the current month to estimate seasonal factors for the current and all previous months. This process can result in revisions each month to estimates for earlier periods. However, in most instances, the only noticeable revisions will be to the seasonally adjusted estimates for the previous month and one year prior to the current month. From the March 2015 issue of this publication, the effects of supplementary surveys are removed prior to the estimation of seasonal factors for key Labour Force series from February 1978 onwards. While this methodology has addressed short term volatility in the seasonally adjusted series arising from changes to the timing and content of the supplementary survey program, in general prior corrections and resulting changed seasonal patterns can be identified and measured to a more reliable degree of certainty after three successive observations (in this case after three years). For further details refer to the October and December 2014 issues of this publication.

31 The revision properties of the seasonally adjusted and trend estimates can be improved by the use of Autoregressive Integrated Moving Average (ARIMA) modelling. ARIMA modelling relies on the characteristics of the series being analysed to project future period data. The projected values are temporary, intermediate values, that are only used internally to improve the estimation of the seasonal factors. The projected data do not affect the original estimates and are discarded at the end of the seasonal adjustment process. The Labour Force Survey uses an ARIMA model for the majority of the individual time series. The ARIMA model is assessed as part of the annual reanalysis. For further details, see the feature article in the October 2004 issue of *Australian Economic Indicators* (cat. no. 1350.0).

32 Seasonal adjustment is able to remove the effect of events which occur at the same time in the survey every year. However, there are some events, like holidays, which are not always at the same time in the survey cycle or which are not at the same time across Australia. The effects of these types of events on Labour Force Survey estimates cannot in all cases be removed, because the pattern of their effects cannot be determined. However, two events for which adjustment is made in the seasonally adjusted series are the January interview start date and the timing of Easter. For further details, see *Information Paper: Forthcoming Changes to Labour Force Statistics* (cat. no. 6292.0) released in December 2003.

33 While seasonal factors for the complete time series are estimated each month, they will continue to be reviewed annually at a more detailed level to take into account each additional year's original data. This annual review will not normally result in significant changes to published estimates. The review is usually conducted early each year with the results released in this publication shortly thereafter.

EXPLANATORY NOTES *continued*

SEASONAL ADJUSTMENT AND TREND ESTIMATION *continued*

34 The smoothing of seasonally adjusted series to produce 'trend' series reduces the impact of the irregular component of the seasonally adjusted series. These trend estimates are derived by applying a 13-term Henderson-weighted moving average to all months except the last six. The last six monthly trend estimates are obtained by applying surrogates of the Henderson average to the seasonally adjusted series. Trend estimates are used to analyse the underlying behaviour of a series over time.

35 While this smoothing technique enables estimates to be produced for the latest month, it does result in revisions in addition to those caused by the revision of seasonally adjusted estimates. Generally, revisions due to the use of surrogates of the Henderson average become smaller, and after three months have a negligible impact on the series.

36 Trend estimates are published for the Northern Territory in table 10 and for the Australian Capital Territory in table 11. Unadjusted series for the two Territories have shown, historically, a high degree of variability, which can lead to considerable revisions to the seasonally adjusted estimates each month when seasonal factors are estimated. For this reason, seasonally adjusted estimates are not currently published for the two Territories. In addition, caution should be exercised in the interpretation of trend estimates for the two Territories, particularly for the three most recent months, where revisions may be relatively large.

37 For further information, see *A Guide to Interpreting Time Series – Monitoring Trends* (cat. no. 1349.0) or contact the Assistant Director, Time Series Analysis on (02) 6252 6345 or email time.series.analysis@abs.gov.au.

RELATED PUBLICATIONS

38 Users may also wish to refer to the following publications:

- *Labour Force Survey Standard Products and Data Item Guide* (cat.no. 6103.0). This publication is a reference guide for users of Labour Force Survey data standard products.
- *Australian Labour Market Statistics* (cat. no. 6105.0). This publication presents key indicators of the labour market, articles on a range of labour market issues, and information about the latest developments in the labour statistics program. For further information about this publication, please contact Labour Market Statistics on (02) 6252 7206.

39 ABS information about the labour market can be found on the Topics @ a Glance page on the ABS website <<http://www.abs.gov.au>>.

40 Information about current publications and other products released by the ABS is available from the statistics page on the ABS website. The ABS also issues a daily release advice on the website, Upcoming Product Releases, which details products to be released in the week ahead.

DATA AVAILABLE ON REQUEST

41 As well as the statistics included in this and related publications, the ABS may have other relevant data available. Inquiries should be made to the Labour Force contact officer on (02) 6252 6525, email labourforce@abs.gov.au or to any ABS office.

EFFECTS OF ROUNDING

42 Estimates have been rounded and discrepancies may occur between sums of the component items and totals. Estimates of movement shown in this publication are obtained by taking the difference of unrounded estimates. The movement estimate is then rounded. Where a discrepancy occurs between the reported movement and the difference of the rounded estimates, the reported movement will be more accurate.

EXPLANATORY NOTES *continued*

SYMBOLS AND ABBREVIATIONS

43 SYMBOLS AND ABBREVIATIONS

<i>Symbol</i>	<i>Definition</i>
'000	thousands
%	percentage
ABS	Australian Bureau of Statistics
CAI	computer assisted interviewing
cat. no.	catalogue number
Civ. pop.	civilian population
ERP	estimated resident population
Emp. to pop. ratio	employment to population ratio
f/t	full time
LFS	Labour Force Survey
NILF	not in the Labour Force
Part. rate	participation rate
p/t	part time
pts	percentage points
Seas adj.	seasonally adjusted
TAFE	Technical and Further Education
Unemp. rate	unemployment rate

STANDARD ERRORS

STANDARD ERRORS

The estimates in this publication are based on information gained from the occupants of a sample survey of dwellings. Because the entire population is not surveyed, the published original, seasonally adjusted and trend estimates are subject to sampling error. The most common way of quantifying such sampling error is to calculate the standard error for the published estimate or statistic. For more information, see paragraphs 25 to 27 of the Explanatory Notes.

LEVEL ESTIMATES

To illustrate, let us say the published level estimate for employed persons aged 15–19 years is 700,000 and the associated standard error is 9,000. The standard error is then used to interpret the level estimate of 700,000. For instance, the standard error of 9,000 indicates that:

- There are approximately two chances in three that the real value falls within the range 691,000 to 709,000 (700,000 + or – 9,000)
- There are approximately nineteen chances in twenty that the real value falls within the range 682,000 to 718,000 (700,000 + or – 18,000).

The real value in this case is the result we would obtain if we could enumerate the total population.

The following table shows the standard errors for this month's level estimates.

											AUSTRALIA										
											Males	Females	Persons								
											NSW	Vic.	Qld	SA	WA	Tas.	NT	ACT			
Aged 15 years and over																					
Employed																					
Full time	'000	25.7	18.2	17.3	7.3	11.3	2.9	2.4	2.8	31.9	23.1	38.6									
Part time	'000	18.4	12.5	12.0	5.6	8.3	2.2	0.7	1.9	13.7	21.6	26.6									
Total	'000	28.2	22.7	19.9	8.6	12.4	3.4	2.8	3.0	34.9	32.6	43.9									
Unemployed																					
Looking for f/t work	'000	9.0	7.5	8.0	3.3	5.1	1.2	0.6	1.0	12.0	9.7	15.6									
Looking for p/t work	'000	5.7	5.1	5.0	2.3	2.7	0.7	0.4	0.7	6.2	7.5	9.8									
Total	'000	10.8	9.1	9.1	3.9	5.8	1.4	0.7	1.3	13.6	12.4	18.6									
Labour force																					
Not in labour force	'000	28.6	23.3	20.4	8.8	12.6	3.5	2.9	3.0	35.8	33.4	44.7									
Unemployment rate																					
Looking for f/t work	pts	0.3	0.4	0.5	0.6	0.5	0.7	0.5	0.7	0.2	0.3	0.2									
Looking for p/t work	pts	0.5	0.5	0.6	0.7	0.6	0.7	1.3	1.2	0.5	0.3	0.2									
Total	pts	0.3	0.3	0.4	0.4	0.4	0.5	0.5	0.6	0.2	0.2	0.1									
Participation rate	pts	0.5	0.5	0.5	0.6	0.6	0.8	1.5	1.0	0.4	0.3	0.2									
Aged 15–19 years																					
Employed																					
Full time	'000	3.9	1.9	2.6	0.9	1.7	0.5	0.2	0.4	4.7	3.7	5.4									
Part time	'000	5.6	3.5	4.3	1.8	2.6	0.8	0.2	0.7	6.3	7.1	9.1									
Total	'000	6.5	3.8	4.9	2.0	3.1	0.9	0.3	0.7	7.4	7.6	10.3									
Unemployed																					
Looking for f/t work	'000	3.0	2.0	2.8	0.9	1.6	0.4	0.1	0.2	3.9	3.0	4.9									
Looking for p/t work	'000	3.4	3.2	2.6	1.6	1.6	0.4	0.2	0.6	4.3	4.3	6.1									
Total	'000	4.6	3.9	3.9	1.9	2.3	0.6	0.3	0.6	5.8	5.3	7.9									
Labour force																					
Not in labour force	'000	7.2	4.3	5.4	2.3	3.4	1.0	0.3	0.8	8.1	8.2	11.3									
Unemployment rate																					
Looking for f/t work	pts	4.0	5.7	5.1	8.3	5.8	6.5	2.2	13.3	2.8	4.1	2.3									
Looking for p/t work	pts	2.0	2.2	2.0	3.1	2.4	2.9	4.9	5.5	1.6	1.3	1.0									
Total	pts	1.9	2.2	2.1	3.0	2.4	2.9	3.1	5.1	1.5	1.3	1.0									
Participation rate	pts	1.5	1.2	1.7	2.2	2.1	2.9	1.9	3.6	1.1	1.1	0.8									
Unemployment to population ratio – looking for f/t work																					
	pts	0.6	0.5	0.9	0.9	1.0	1.3	0.5	1.0	0.5	0.4	0.3									

STANDARD ERRORS *continued*

MOVEMENT ESTIMATES

The following example illustrates how to use the standard error to interpret a movement estimate. Let us say that one month the published level estimate for females employed part-time in Australia is 1,890,000; the next month the published level estimate is 1,900,000 and the associated standard error for the movement estimate is 11,900. The standard error is then used to interpret the published movement estimate of 10,000. For instance, the standard error of 11,900 indicates that:

- There are approximately two chances in three that the real movement between the two months falls within the range – 1,900 to 21,900 (10,000 + or – 11,900)
- There are approximately nineteen chances in twenty that the real movement falls within the range – 13,800 to 33,800 (10,000 + or – 23,800).

The following table shows the standard errors for this month's movement estimates.

		AUSTRALIA										
		NSW	Vic.	Qld	SA	WA	Tas.	NT	ACT	Males	Females	Persons
Aged 15 years and over												
Employed												
Full time	'000	15.1	12.0	9.3	3.8	6.7	1.7	1.9	1.8	18.5	13.6	23.5
Part time	'000	9.7	8.5	6.0	2.9	4.3	1.3	0.9	1.1	8.7	12.8	15.4
Total	'000	18.1	14.9	12.9	5.5	8.7	2.2	2.0	2.1	20.6	19.0	29.1
Unemployed												
Looking for f/t work	'000	9.5	7.9	7.6	3.5	5.2	1.2	0.8	1.2	12.3	9.9	16.0
Looking for p/t work	'000	6.0	5.4	4.4	2.3	2.9	0.7	0.4	1.0	6.5	7.5	10.0
Total	'000	11.4	9.6	8.9	4.1	6.0	1.3	0.9	1.4	14.0	12.5	19.1
Labour force	'000	18.7	15.4	13.7	5.9	9.1	2.3	2.1	2.2	21.2	19.5	30.1
Not in labour force	'000	18.0	15.3	13.5	5.9	8.8	2.2	2.0	2.4	18.0	22.0	29.5
Unemployment rate												
Looking for f/t work	pts	0.3	0.4	0.5	0.6	0.5	0.7	0.7	0.7	0.2	0.3	0.2
Looking for p/t work	pts	0.5	0.5	0.7	0.8	0.7	0.8	1.5	1.3	0.5	0.3	0.3
Total	pts	0.3	0.3	0.4	0.5	0.4	0.5	0.7	0.6	0.2	0.2	0.2
Participation rate	pts	0.3	0.3	0.4	0.4	0.4	0.5	1.1	0.7	0.2	0.2	0.2
Aged 15–19 years												
Employed												
Full time	'000	2.5	1.8	1.7	0.7	1.2	0.4	0.4	0.3	3.3	2.6	3.8
Part time	'000	3.8	3.2	2.7	1.3	1.9	0.5	0.4	0.5	4.3	4.9	6.1
Total	'000	4.3	3.5	3.0	1.4	2.1	0.6	0.5	0.5	5.0	5.2	6.7
Unemployed												
Looking for f/t work	'000	3.1	2.2	2.7	1.0	1.7	0.4	0.2	0.2	3.9	3.1	5.0
Looking for p/t work	'000	3.6	3.4	2.6	1.6	1.7	0.4	0.2	0.7	4.5	4.3	6.1
Total	'000	4.7	4.1	3.9	1.8	2.4	0.6	0.3	0.7	5.9	5.3	7.9
Labour force	'000	4.7	3.8	3.2	1.5	2.3	0.7	0.6	0.6	5.4	5.5	7.3
Not in labour force	'000	6.0	4.9	3.8	1.8	2.8	0.7	0.9	0.7	7.0	6.6	9.2
Unemployment rate												
Looking for f/t work	pts	4.4	6.0	5.6	9.1	5.8	7.2	3.3	16.9	3.0	4.6	2.5
Looking for p/t work	pts	2.1	2.5	2.3	3.2	2.4	3.1	4.7	5.8	1.8	1.3	1.1
Total	pts	2.0	2.4	2.4	3.2	2.4	3.1	3.1	5.5	1.6	1.4	1.0
Participation rate	pts	1.0	1.1	1.0	1.5	1.4	2.0	3.5	2.6	0.7	0.8	0.5
Unemployment to population ratio – looking for f/t work	pts	0.7	0.6	0.9	1.0	1.1	1.3	0.9	1.1	0.5	0.4	0.3

GLOSSARY

Actively looked for work	<p>Actively looked for work includes:</p> <ul style="list-style-type: none">■ written, telephoned or applied to an employer for work;■ had an interview with an employer for work;■ answered an advertisement for a job;■ checked or registered with a Job Services Australia provider or any other employment agency;■ taken steps to purchase or start your own business;■ advertised or tendered for work; and■ contacted friends or relatives in order to obtain work.
Actual hours of work	<p>Actual hours of work refers to a specified reference period (e.g. a week) and includes:</p> <ul style="list-style-type: none">■ hours actually worked during normal periods of work;■ time spent in addition to hours worked during normal periods of work (including overtime);■ time spent at the place of work on activities such as the preparation of the workplace, repairs and maintenance, preparation and cleaning of tools, and the preparation of receipts, time sheets and reports;■ time spent at the place of work waiting or standing by due to machinery or process breakdown, accident, lack of supplies, power or internet access, etc;■ time corresponding to short rest periods (resting time) including tea and coffee breaks or prayer breaks;■ travel time connected to work (excluding commuting time); and■ training and skills enhancement related to the job or employer. <p>Excluded are:</p> <ul style="list-style-type: none">■ hours paid for but not worked, such as paid annual leave, public holidays or paid sick leave;■ meal breaks (e.g. lunch breaks);■ paid and unpaid time 'on call';■ time spent on travel to and from work when no productive activity for the job is performed (e.g. commuting time); and■ time off during working hours to attend outside educational activities, even if it is authorised, e.g. those not connected to the job or employer. <p>For multiple job holders the LFS collects a separate measure of actual hours worked in main job and in all jobs.</p>
Attending full time education	<p>Persons aged 15-24 years enrolled at secondary or high school or enrolled as a full time student at a Technical and Further Education (TAFE) college, university, or other educational institution in the reference week.</p>
Attending school	<p>Persons aged 15-19 years enrolled at secondary or high school in the reference week.</p>
Attending tertiary educational institution full time	<p>Persons aged 15-24 years enrolled full time at a TAFE college, university, or other educational institution in the reference week, except those persons aged 15-19 years who were still attending school.</p>
Civilian population aged 15 years and over	<p>All usual residents of Australia aged 15 years and over except members of the permanent defence forces, certain diplomatic personnel of overseas governments customarily excluded from census and estimated population counts, overseas residents in Australia, and members of non-Australian defence forces (and their dependants) stationed in Australia.</p>
Composite Estimation	<p>The estimation methodology used in the Labour Force Survey. Composite Estimation uses sample responses from nearby months as well as from the reference month to derive estimates for the reference month. This approach achieves gains in efficiency by exploiting the high similarity between the responses provided by the same respondent in previous months. For details see <i>Information Paper: Forthcoming Changes to Labour Force Statistics</i>, 2007 (cat. no. 6292.0).</p>

GLOSSARY *continued*

Employed	<p>All persons aged 15 years and over who met one of the following criteria during the reference week:</p> <ul style="list-style-type: none">■ Worked for one hour or more for pay, profit, commission or payment in kind, in a job or business or on a farm (employees and owner managers of incorporated or unincorporated enterprises).■ Worked for one hour or more without pay in a family business or on a farm (contributing family workers).■ Were employees who had a job but were not at work and were:<ul style="list-style-type: none">■ away from work for less than four weeks up to the end of the reference week; or■ away from work for more than four weeks up to the end of the reference week and received pay for some or all of the four week period to the end of the reference week; or■ away from work as a standard work or shift arrangement; or■ on strike or locked out; or■ on workers' compensation and expected to return to their job.■ Were owner managers who had a job, business or farm, but were not at work.
Employed full-time	<p>Includes employed persons who usually worked 35 hours or more a week (in all jobs) and those who, although usually working less than 35 hours a week, worked 35 hours or more during the reference week.</p>
Employed part-time	<p>Includes employed persons who usually worked less than 35 hours a week (in all jobs) and either did so during the reference week, or were not at work in the reference week.</p>
Employment to population ratio	<p>For any group, the number of employed persons expressed as a percentage of the civilian population in the same group.</p>
Estimated resident population (ERP)	<p>Estimated resident population (ERP), is Australia's official measure of the population of Australia and is based on the concept of usual residence. It refers to all people, regardless of nationality, citizenship or legal status, who usually live in Australia, with the exception of foreign diplomatic personnel and their families. It includes usual residents who are overseas for fewer than 12 months. It excludes overseas visitors who are in Australia for fewer than 12 months. Refer to Australian Demographic Statistics (cat. no. 3101.0).</p>
Flow estimates	<p>Flow estimates are a measure of activity over a given period. For example, monthly hours worked in all jobs is a measure of the total number of hours worked in a calendar month.</p>
Gross flows	<p>The matching of respondents who report in consecutive months enables analysis of the transition of individuals between the different labour force status classifications, referred to as the matched sample. The transition counts between the different labour force status classifications from one point in time to the next are commonly referred to as gross flows.</p> <p>The figures presented in gross flows are presented in original terms only and do not align with published labour force estimates. The gross flows figures are derived from the matched sample between consecutive months, which after taking account of the sample rotation and varying non-response in each month is approximately 80 percent of the sample.</p> <p>Caution should be exercised when analysing these gross flows data due to:</p> <ul style="list-style-type: none">■ the figures presented sum to approximately 80 percent of the population values as the gross flows data are based on the matched sample only;■ there is no adjustment applied to account for changes due to seasonal patterns (referred to commonly as seasonal adjustment); and■ the estimates of relative sizes of each transition class are subject to bias due to the matched sample being a non-representative sample.
Labour force	<p>For any group, persons who were employed or unemployed, as defined.</p>

GLOSSARY *continued*

Labour force status	A classification of the civilian population aged 15 years and over into employed, unemployed or not in the labour force, as defined. The definitions conform closely to the international standard definitions adopted by the International Conferences of Labour Statisticians.
Long-term unemployed	The number of persons unemployed for 52 weeks or over.
Long-term unemployment ratio	The number of long-term unemployed persons, expressed as a percentage of the total unemployed population.
Market sector	The market sector is an industry grouping comprising the following industries: Agriculture, forestry and fishing; Mining; Manufacturing; Electricity, gas, water and waste services; Construction; Wholesale trade; Retail trade; Accommodation and food services; Transport, postal and warehousing; Information media and telecommunications; Finance and insurance services; Rental, hiring and real estate services; Professional, scientific and technical services; Administrative and support services; Arts and recreation services; and Other services. Refer to Australian National Accounts: Concepts, Sources and Methods (cat. no. 5216.0).
Non-market Sector	The non-market sector is an industry grouping comprising the following industries: Education and training; Public administration & safety; and Health care and social assistance. Refer to Australian National Accounts: Concepts, Sources and Methods (cat. no. 5216.0).
Monthly hours worked in all jobs	<p>Monthly hours worked in all jobs measures the total number of actual hours worked by employed persons in a calendar month. It differs from the actual hours worked estimates (and the usual hours worked estimates) since these refer only to the hours worked in the reference week.</p> <p>The methodology used to produce monthly hours worked in all jobs means that these are synthetic estimates. Seasonally adjusted and trend estimates of monthly hours worked in all jobs are available for the period July 1978 onwards.</p> <p>Further information on the methodology used to produce the monthly hours worked in all jobs estimates is available on the ABS website in <i>Information Paper: Expansion of Hours Worked Estimates from the Labour Force Survey</i> (cat. no. 6290.0.55.001).</p> <p>Actual and usual hours worked cannot be aggregated across time to produce either quarterly or annual estimates as they relate to only a single week in the month. In contrast, monthly hours worked in all jobs estimates are a true monthly measure, and may be aggregated across time to produce both quarterly and annual estimates.</p>
Not in labour force	Persons who were not in the categories employed or unemployed, as defined. They include people who undertook unpaid household duties or other voluntary work only, were retired, voluntarily inactive and those permanently unable to work.
Participation rate	For any group, the labour force expressed as a percentage of the civilian population aged 15 years and over in the same group.
Response rate	The number of fully responding dwellings expressed as a percentage of the total number of dwellings excluding sample loss. Examples of sample loss include: dwellings where all persons are out of scope and/or coverage; vacant dwellings; dwellings under construction; dwellings converted to non-dwellings; derelict dwellings; and demolished dwellings.
Seasonally adjusted series	A time series of estimates with the estimated effects of normal seasonal variation removed. See Explanatory Notes for more detail.
Stock estimates	Stock estimates are a measure of certain attributes at a point in time and can be thought of as stocktakes. For example, the total number of employed persons is an account of the number of people who were considered employed in the Labour Force Survey reference week.

GLOSSARY *continued*

Trend series	A smoothed seasonally adjusted series of estimates. See Explanatory Notes for more detail.
Underemployment rate (proportion of labour force)	The number of underemployed workers expressed as a percentage of the labour force.
Underemployment ratio (proportion of employed)	The number of underemployed workers expressed as a percentage of total employed persons.
Underemployed workers	Employed persons aged 15 years and over who want, and are available for, more hours of work than they currently have. They comprise: <ul style="list-style-type: none">■ persons employed part time who want to work more hours and are available to start work with more hours, either in the reference week or in the four weeks subsequent to the survey; or■ persons employed full time who worked part time hours in the reference week for economic reasons (such as being stood down or insufficient work being available). It is assumed that these people wanted to work full time in the reference week and would have been available to do so.
Underutilisation rate	The sum of the number of persons unemployed and the number of persons in underemployment, expressed as a proportion of the labour force.
Unemployed	Persons aged 15 years and over who were not employed during the reference week, and: <ul style="list-style-type: none">■ had actively looked for full time or part time work at any time in the four weeks up to the end of the reference week and were available for work in the reference week; or■ were waiting to start a new job within four weeks from the end of the reference week and could have started in the reference week if the job had been available then.
Unemployed looked for full time work	Unemployed persons who: <ul style="list-style-type: none">■ actively looked for full time work; or■ were waiting to start a new full time job.
Unemployed looked for only part time work	Unemployed persons who: <ul style="list-style-type: none">■ actively looked for part time work only; or■ were waiting to start a new part time job.
Unemployment rate	For any group, the number of unemployed persons expressed as a percentage of the labour force in the same group.
Usual hours of work	Usual hours of work refers to a typical period rather than the hours worked in a specified reference period. The concept of usual hours applies both to persons at work and to persons temporarily absent from work, and is defined as the hours worked during a typical week or day. Actual hours worked (for a specific reference period) may differ from usual hours worked due to illness, vacation, strike, overtime work, a change of job, or similar reasons.

FOR MORE INFORMATION . . .

INTERNET **www.abs.gov.au** the ABS website is the best place for data from our publications and information about the ABS.

INFORMATION AND REFERRAL SERVICE

Our consultants can help you access the full range of information published by the ABS that is available free of charge from our website. Information tailored to your needs can also be requested as a 'user pays' service. Specialists are on hand to help you with analytical or methodological advice.

PHONE 1300 135 070

EMAIL client.services@abs.gov.au

FAX 1300 135 211

POST Client Services, ABS, GPO Box 796, Sydney NSW 2001

FREE ACCESS TO STATISTICS

All statistics on the ABS website can be downloaded free of charge.

WEB ADDRESS www.abs.gov.au